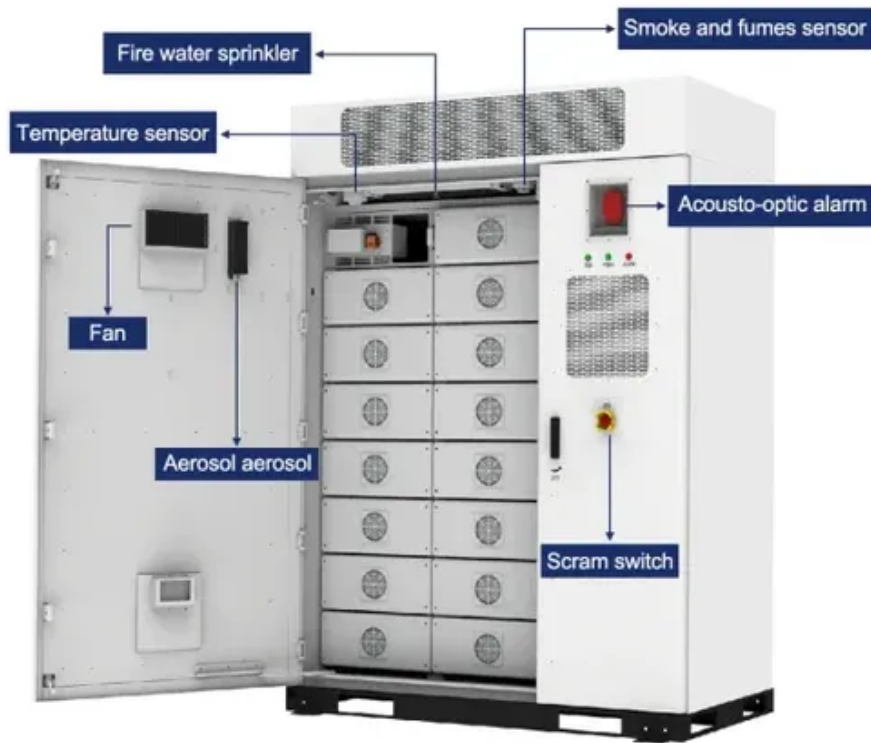




Unified size of solar panels





Overview

Most homes use 60-cell panels measuring 65-by-39 inches. Larger panels, like 72- or 96-cell grids, can boost efficiency. Half-cell panels fit twice the number of cells into a standard-size panel. Depending on your energy needs, you'll need anywhere from 15–34 panels.

Most homes use 60-cell panels measuring 65-by-39 inches. Larger panels, like 72- or 96-cell grids, can boost efficiency. Half-cell panels fit twice the number of cells into a standard-size panel. Depending on your energy needs, you'll need anywhere from 15–34 panels.

Solar panel size is measured in watts (W) and indicates how much electricity the panel can produce under standard test conditions. Here's the key distinction every homeowner should understand: Most residential solar panels in 2025 come in three main configurations: The most common choice for.

The size of solar panels varies depending on the number of photovoltaic (PV) cells they include. Each cell adds to the panel's total voltage and power output. The most commonly used cell layouts are 60-cell, 72-cell, and 96-cell panels. Let's consider their main features and purpose: 60-cell solar.

The size of solar panels and their dimensions are critical components in designing a solar energy system. It is essential to understand the physical characteristics of solar panels for both residential and commercial installations. The size of the solar panel and weight of the solar panel are.

When it comes to standard solar panel sizes, like 300w or 500w, it is essential to determine the size of a solar panel system . The wattage of a commercial solar panel describes its power output -- how much power it can produce under standard testing conditions. Output for Different Sizes and.

Solar panel size shapes everything from the watts to the ease of lifting a module onto a roof. The insights that follow weigh the gains and compromises of large versus compact panels, helping you choose a size that truly fits - Solar panel size is the key metric of every installation. A standard.

Understanding solar panel dimensions is crucial for planning your solar system



installation, maximizing efficiency, and ensuring compatibility with your available space. In this blog, we'll break down the standard sizes of solar panels, explain how panel dimensions impact performance, and help you.



Unified size of solar panels



[Standard Solar Panel Sizes And Wattages \(100W-500W ...](#)

To bridge that gap of very useful knowledge needed, we have compared and averaged the sizes of 100-watt to 500-watt solar panels available on the market. The goal here is to get to the ...

[Standard Solar Panel Sizes And Wattages \(100W ...](#)

To bridge that gap of very useful knowledge needed, we have compared and averaged the sizes of 100-watt to 500-watt solar panels available on the ...



[Size of Solar Panels Explained: Residential and ...](#)

Knowing about the size and solar panel weight is necessary to install effectively and it's performance. Here we explain them in detail.

saas-fee-azurit

In this guide, we'll unpack solar panel size in greater detail, helping you determine how large of a system your property can accommodate before you purchase your panels.



[Solar Panel Size & Dimensions Guide 2025 _ Complete Specs](#)

In this comprehensive guide, you'll learn everything you need to know about solar panel sizing, from standard dimensions to weight considerations, helping you determine the ...



[Solar Panel Dimensions and Weight: A Complete Guide , Angi](#)

72-cell solar panels measure about 80-by-40 inches with a depth of 1 1/2 inches. This option is popular for homeowners requiring a larger output or wanting to improve ...



[Detailed Guide to Solar Panel Size & Dimensions](#)

Looking to install solar panels? Learn about solar panel dimensions, wattage, cell types, and how to calculate the system size for your home's energy needs.





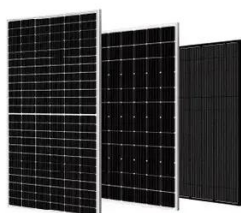
[Understanding Solar Panel Dimensions In 2025: A ...](#)

Explore the most common solar panel dimensions in 2025, including residential and commercial sizes. Learn how solar panel size ...



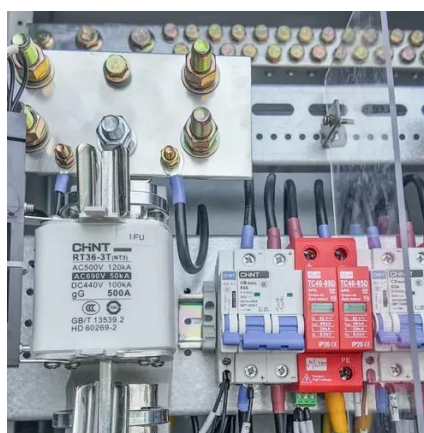
Complete Guide to Solar Panel Size

Most home solar panels are about 5.5 feet x 3 feet and weigh roughly 40 pounds each. Most of the time, you won't see the size of solar panels expressed in feet. Instead, you'll see it's listed ...



Size of Solar Panels Explained: Residential and Commercial ...

Knowing about the size and solar panel weight is necessary to install effectively and it's performance. Here we explain them in detail.



[Solar Panel Size Guide , Best Panel Size for Your Roof](#)

Learn how to choose the ideal solar panel size for your home. Get expert tips, standard dimensions, and a size chart to simplify your solar decisions.





Understanding Solar Panel Dimensions In 2025: A Complete Size ...

...

Explore the most common solar panel dimensions in 2025, including residential and commercial sizes. Learn how solar panel size dimensions affect power, installation, and ...

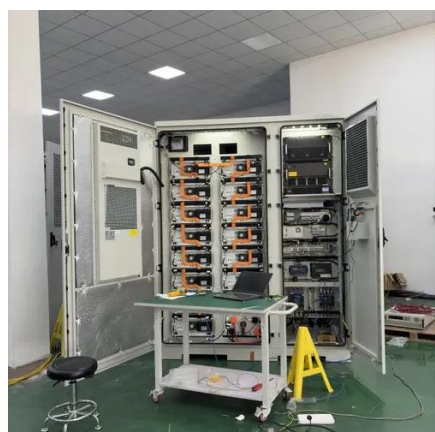


[Detailed Guide to Solar Panel Size & Dimensions](#)

Looking to install solar panels? Learn about solar panel dimensions, wattage, cell types, and how to calculate the system size for ...

[Unified standards for photovoltaic panel sizes](#)

The number of cells within a panel dictates its size - 60-cell and 72-cell panels are the most common solar panel sizes. 60-cell solar panels are the standard solar panel size for homes.



[Solar Panel Size Guide , Best Panel Size for Your ...](#)

Learn how to choose the ideal solar panel size for your home. Get expert tips, standard dimensions, and a size chart to simplify your ...



[Solar Panel Dimensions and Weight: A Complete ...](#)

72-cell solar panels measure about 80-by-40 inches with a depth of 1 1/2 inches. This option is popular for homeowners requiring a ...





Contact Us

For inquiries, pricing, or partnerships:

<https://www.sccd-sk.eu>

Phone: +32 2 808 71 94

Email: info@sccd-sk.eu

Scan QR code for WhatsApp.

