



Unit weight of rooftop solar panels





Overview

Standard residential solar panels generally weigh between 40 and 50 pounds each. A typical panel measures roughly 65 inches by 39 inches, and the weight distribution averages about 2 to 4 pounds per square foot of roof area.

Standard residential solar panels generally weigh between 40 and 50 pounds each. A typical panel measures roughly 65 inches by 39 inches, and the weight distribution averages about 2 to 4 pounds per square foot of roof area.

All individual solar panels weigh less than 100 lbs. However, solar systems with 8kW rated capacity and above add more than 1,000 lbs to your roof. Not to worry, however. We have sampled 6 different solar panels with wattages ranging from 100W to 400W, and total weights ranging from 11.5 lbs to.

These panels cover an area of 17.62 square feet and weigh around 40 pounds, excluding the weight of frames and mounting equipment. On the other hand, commercial solar panels typically feature 72 cells, with dimensions of approximately 3.25 feet by 6.5 feet. These panels cover an area of 21.13.

Standard residential solar panels are typically around 5.8 feet long by 3.5 feet wide and weigh between 40 to 50 pounds. However, the exact dimensions depend heavily on the panel's technology, wattage, and the manufacturer's design. Understanding these specifications is crucial for determining roof.

However, one common concern is the weight of solar panels on roofs and whether existing structures can handle the additional load. This article explores the weight considerations of solar panel installations, structural factors, and tips to ensure a safe and efficient setup. How Much Do Solar.

Standard residential solar panels come in a few main varieties. Most homeowners use silicon-based photovoltaic (PV) panels, typically available in 60-cell or 72-cell configurations. A standard 60-cell panel weighs between 35 and 42 lbs (16-19 kg). Larger 72-cell panels can weigh from 45 to 50 lbs.

Most home solar panels weigh 35-50 pounds, or around 2.5-4 pounds per square foot. Most standard residential solar panels weigh around 40 pounds. That's roughly the size of a big flat-screen TV—but heavier and less fun at parties. You're



usually looking at 2.5 to 3 pounds per square foot. So if.



Unit weight of rooftop solar panels



[Solar Panel Size And Weight: A Comprehensive Guide](#)

It is also important to consider the weight of installing solar panels on your rooftop. On average, mounting equipment and solar panels weigh two to four pounds per square foot.

[How Much Does a Solar Panel Weight? Find Out Before You Buy](#)

Most standard residential solar panels weigh around 40 pounds. That's roughly the size of a big flat-screen TV--but heavier and less fun at parties. You're usually looking at 2.5 ...



Weight of Solar Panels on Roof and What Homeowners Should ...

Standard residential solar panels generally weigh between 40 and 50 pounds each. A typical panel measures roughly 65 inches by 39 inches, and the weight distribution ...

[How Much Do Solar Panels Weigh? 1.30 - 2,608.7 lbs Chart](#)

When figuring out how much weight do solar panels add to a roof, that would be quite useful data to have. All individual solar panels weigh less



than 100 lbs. However, solar systems with 8kW ...



Weight of Solar Panels on Roof: Understanding Mass, Roof Load, ...

Most residential PV modules weigh between 40 and 50 pounds (18-23 kg). Typical dimensions are about 65 inches by 39 inches, resulting in roughly 17.5 square feet of panel ...

How Much Do Solar Panels Weigh?

When you take into account the solar panels and all the mounting equipment, racking, junction boxes, and wiring, the total weight of the solar installation comes in at around 3-4 pounds per ...



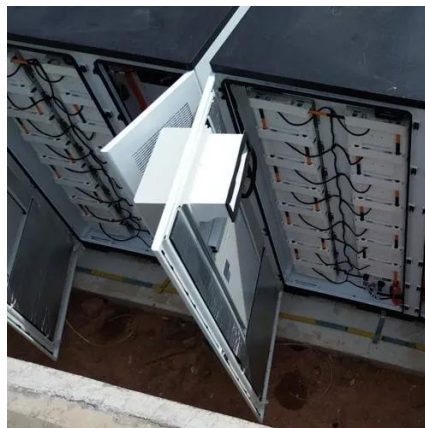
[Solar Panel Size And Weight: A Comprehensive Guide](#)

Find the exact solar panel size & weight in our 2025 guide. Our complete chart compares models by ft/cm and lbs/kg to help you plan ...



[Can Your Roof Support Solar Panels? Key Weight Insights](#)

How Much Do Solar Panels Weigh? And Does It Matter for Your Roof? Considering going solar but worried about your roof holding up? Let's break down what you ...

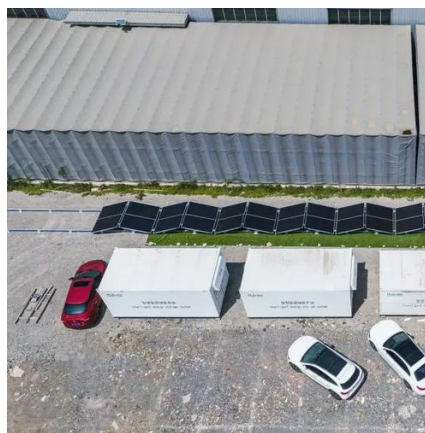


The Ultimate Guide to Solar Panel Size, Weight & Wattage (2025)

Find the exact solar panel size & weight in our 2025 guide. Our complete chart compares models by ft/cm and lbs/kg to help you plan your installation.

Weight Of Solar Panels On Roof: Detailed Guide For Safe Solar

Most homeowners use silicon-based photovoltaic (PV) panels, typically available in 60-cell or 72-cell configurations. A standard 60-cell panel weighs between 35 and 42 lbs (16 ...



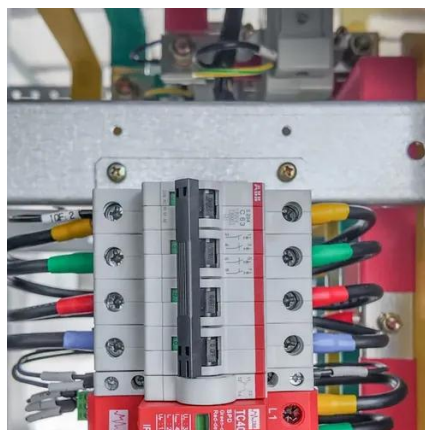
[How Much Do Solar Panels Weigh? 1.30 - 2,608.7 ...](#)

When figuring out how much weight do solar panels add to a roof, that would be quite useful data to have. All individual solar panels weigh less than ...



[How Much Do Solar Panels Weigh? \(Chart\)](#)

Are you worried about the extra weight solar panels add to your roof? Along with space considerations, it's important to ensure your roof can support the weight and to know ...





Contact Us

For inquiries, pricing, or partnerships:

<https://www.sccd-sk.eu>

Phone: +32 2 808 71 94

Email: info@sccd-sk.eu

Scan QR code for WhatsApp.

