



Victoria Energy Storage Container Power Station





Victoria Energy Storage Container Power Station



Powering Victoria's Renewable Energy Storage Future , Premier

An additional 150-megawatt of energy storage capacity will be added to Victoria's grid thanks to a new big battery located at the former coal-fired power station in Hazelwood, ...

[Approval granted for 4.9GWh of battery energy ...](#)

According to planning documents, the facility will use lithium iron phosphate (LFP) battery technology housed in approximately 200 ...



[Victoria -- Industry News -- China Energy Storage Alliance](#)

The Tramway Road BESS will deliver a 4-hour duration storage capacity of 300MW, positioning the facility to provide grid stability services and energy arbitrage ...

Victorian Big Battery

The Victorian Big Battery is a grid-connected battery energy storage system (BESS) facility adjacent to the Moorabool Terminal Station (substation) near Geelong in Victoria, Australia ...



[Wartsila Will Provide a 350 MW / 1474 MWh Energy Storage Sys](#)

Technology group Wärtsilä has been contracted by EnergyAustralia to deliver 350 MW / 1474 MWh of capacity to the Wooreen Energy Storage System (WESS) in Victoria, ...



[Victoria launches 200MWh Renewable Energy Park construction](#)

This ambitious endeavor involves a 200MWh battery energy storage system (BESS) paired with a solar photovoltaic (PV) power plant, highlighting Victoria's commitment to ...



200kWh Battery Cluster

[Origin building 650 MWh big battery in Victoria](#)

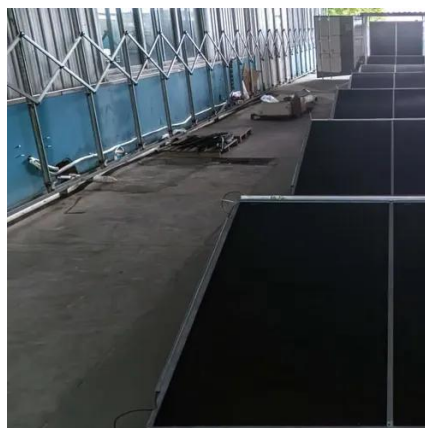
Origin Energy has officially begun building a 650 MWh battery energy storage system alongside its gas-fired power station at Mortlake in ...





Approval granted for 4.9GWh of battery energy storage in Victoria

According to planning documents, the facility will use lithium iron phosphate (LFP) battery technology housed in approximately 200 containerised units. It will also have advanced ...



[Batteries and energy storage projects](#)

Victoria is the home of big batteries and has legislated storage targets of at least 2.6 GW by 2030 and 6.3 GW by 2035 to provide crucial support for more renewable capacity.

[Origin building 650 MWh big battery in Victoria](#)

Origin Energy has officially begun building a 650 MWh battery energy storage system alongside its gas-fired power station at Mortlake in southwest Victoria, saying the ...



[Victoria Energy Storage Container Power Station](#)

Origin Energy has officially begun building a 650 MWh battery energy storage system alongside its gas-fired power station at Mortlake in southwest Victoria, saying the project will support ...



[WORK BEGINS ON VICTORIA'S 200MWH SEC RENEWABLE ENERGY ...](#)

This article establishes a full life cycle cost and benefit model for independent energy storage power stations based on relevant policies, current status of the power system, and trading ...





Contact Us

For inquiries, pricing, or partnerships:

<https://www.sccd-sk.eu>

Phone: +32 2 808 71 94

Email: info@sccd-sk.eu

Scan QR code for WhatsApp.

