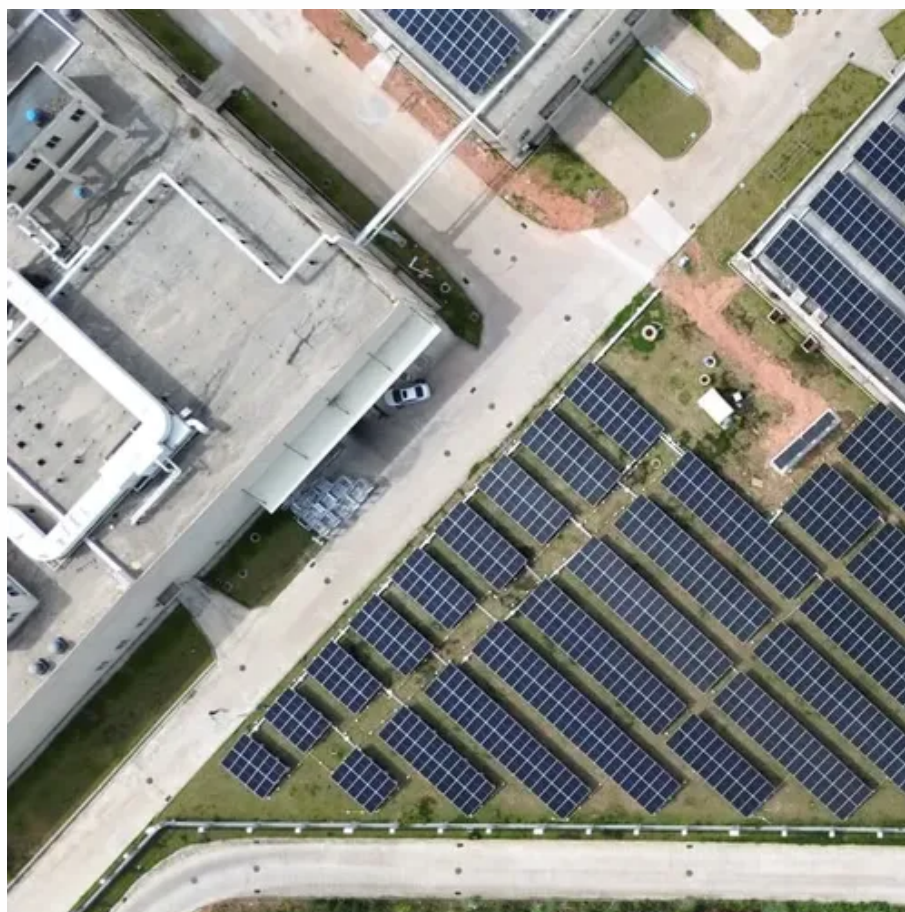




# Wellington Flow Battery





## Overview

---

A flow battery, or redox flow battery (after ), is a type of where is provided by two chemical components in liquids that are pumped through the system on separate sides of a membrane. inside the cell (accompanied by current flow through an external circuit) occurs across the membrane while the liquids circulate in their respective spaces.

Where is Wellington South Battery energy storage system being developed?

Wellington South Battery Energy Storage System is being developed in NSW, Australia. (Credit: Sungrow EMEA on Unsplash) The Wellington Battery Energy Storage System (BESS) is planned to be developed in the central west New South Wales (NSW), Australia. The project will comprise a grid-scale BESS with a total discharge capacity of around 400MW.

What is the Wellington Battery energy storage system (BESS)?

The Wellington Battery Energy Storage System (BESS) is planned to be developed in the central west New South Wales (NSW), Australia. The project will comprise a grid-scale BESS with a total discharge capacity of around 400MW. AMPYR Australia, a renewable energy assets developer in the country, owns 100% of the BESS project.

How do flow batteries work?

Flow batteries operate distinctively from “solid” batteries (e.g., lead and lithium) in that a flow battery’s energy is stored in the liquid electrolytes that are pumped through the battery system (see image above) while a solid-state battery stores its energy in solid electrodes. There are several components that make up a flow battery system:.

Are flow batteries energy efficient?

Flow batteries are generally known to have energy efficiency ranging from 65% to 85% depending on the type of battery and management system. However, it is known that some types of well-designed flow batteries can achieve good high efficiency. What Are Flow Batteries Used For?



## Wellington Flow Battery

---



### [About Flow Batteries , Battery Council International](#)

Flow batteries are notable for their scalability and long-duration energy storage capabilities, making them ideal for stationary applications that demand consistent and reliable power. Their ...

### [AMPYR Australia Secures Funding for Wellington ...](#)

Set to be operational by 2026, the project will enhance the availability of reliable renewable energy and reduce electricity costs for ...



### [Fluence Energy selected for big Australian battery ...](#)

The Wellington Stage 1 BESS, which is AMPYR's first grid-scale battery energy storage system to reach financial close in Australia, is scheduled ...

### [What is a Flow Battery? A Comprehensive ...](#)

If you don't know it, don't worry, because in this article we will thoroughly explore what is a flow battery, starting from understanding flow ...



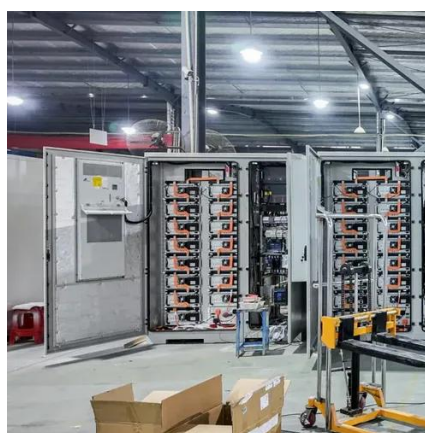
### [Fluence Chosen for 300 MW / 600 MWh Wellington Battery ...](#)

The Wellington Stage 1 BESS is AMPYR's first grid-scale battery energy storage system to reach financial close in Australia. This project is scheduled to be energised in 2026, ...



### [AMPYR Australia Secures Funding for Wellington Stage 1 BESS](#)

Set to be operational by 2026, the project will enhance the availability of reliable renewable energy and reduce electricity costs for emerging industries. The financial package ...



### **Flow battery**

The fundamental difference between conventional and flow batteries is that energy is stored in the electrode material in conventional batteries, while in flow batteries it is stored in the electrolyte.



## [Fluence Chosen for 300 MW / 600 MWh Wellington Battery](#)

The Wellington Stage 1 BESS is AMPYR's first grid-scale battery energy storage system to reach financial close in Australia. This project is scheduled to be energised in 2026, ...



## [About Flow Batteries , Battery Council International](#)

Flow batteries are notable for their scalability and long-duration energy storage capabilities, making them ideal for stationary applications that ...

## [Fluence Energy selected for big Australian battery storage](#)

The Wellington Stage 1 BESS, which is AMPYR's first grid-scale battery energy storage system to reach financial close in Australia, is scheduled to become energized in 2026, signaling a



## [Wellington Battery Energy Storage System, Australia](#)

The Wellington Battery Energy Storage System (BESS) is planned to be developed in the central west New South Wales (NSW), Australia. The project will comprise a ...

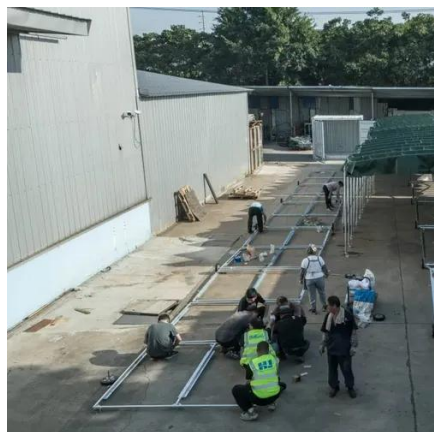




## Flow battery

OverviewHistoryDesignEvaluationTraditional flow batteriesHybridOrganicOther types

A flow battery, or redox flow battery (after reduction-oxidation), is a type of electrochemical cell where chemical energy is provided by two chemical components dissolved in liquids that are pumped through the system on separate sides of a membrane. Ion transfer inside the cell (accompanied by current flow through an external circuit) occurs across the membrane while the liquids circulate in their respective spaces.



### What is a Flow Battery? A Comprehensive Introduction to Liquid ...

If you don't know it, don't worry, because in this article we will thoroughly explore what is a flow battery, starting from understanding flow batteries, their main structure, how they ...

### [Fluence Chosen for 300 MW / 600 MWh Wellington Battery ...](#)

Fluence (NASDAQ: FLNC) has been selected by AMPYR Australia for the 300 MW / 600 MWh Wellington Stage 1 Battery Energy Storage System (BESS) project in New South ...



### Technology: Flow Battery

Their low energy density makes flow batteries unsuited for mobile or residential applications, but attractive on industrial and utility scale. Hence, they are mostly used commercially or by grid ...



## [Wellington Battery Energy Storage System, Australia](#)

The Wellington Battery Energy Storage System (BESS) is planned to be developed in the central west New South Wales (NSW), ...





## Contact Us

---

For inquiries, pricing, or partnerships:

<https://www.sccd-sk.eu>

Phone: +32 2 808 71 94

Email: [info@sccd-sk.eu](mailto:info@sccd-sk.eu)

Scan QR code for WhatsApp.

