



What are non-double-glass solar modules





Overview

Mono-glass (single-glass) solar panels use tempered glass on the front and a polymer backsheet on the rear. This design is reliable and widely used in most homes. Glass-glass (double-glass) panels use glass on both sides. Many are bifacial, meaning they can collect sunlight from the.

Mono-glass (single-glass) solar panels use tempered glass on the front and a polymer backsheet on the rear. This design is reliable and widely used in most homes. Glass-glass (double-glass) panels use glass on both sides. Many are bifacial, meaning they can collect sunlight from the.

Among the current module products on the market, only single-glass modules are equipped with tempered glass. The choice of front and shear materials is critical in determining the module's ability to withstand hail impacts. Over the past decade, the PV industry has experienced a great revolution. A.

Resolve the mono-glass versus dual-glass debate with this detailed analysis of Couleenergy's CLM-470M series, addressing critical factors like the 3.6kg weight difference, Class A vs C fire ratings, and installation requirements. Every solar project starts with a critical choice. And it's not just.

What is a Double Glass Solar Panel?

By contrast, double glass solar panels—also called bifacial solar panels—have a fresh design with transparent layers on both the front and back. Often filled with a transparent encapsulant, this area between the layers increases lifetime and durability. Double.

These modules consist of a front glass layer and a rear polymer-based transparent backsheet, typically made from materials like Tedlar or PET (polyethylene terephthalate). The transparent backsheet allows for some light to pass through, which is beneficial for bifacial modules. The light weight of.

Glass-glass PV modules refer to photovoltaic panels in which the solar cells are encapsulated between two layers of glass, both on the front and the back. Compared to traditional single-glass structures (glass + backsheet), glass-glass technology provides higher protection and durability, ensuring.



As the first layer of materials in the solar module structure, tempered glass can effectively protect the panel and solar cells against physical stress, snow, wind, dust and moisture etc, at the same time guaranteeing that the sunlight can go in. The backside is generally protected by an opaque.



What are non-double-glass solar modules

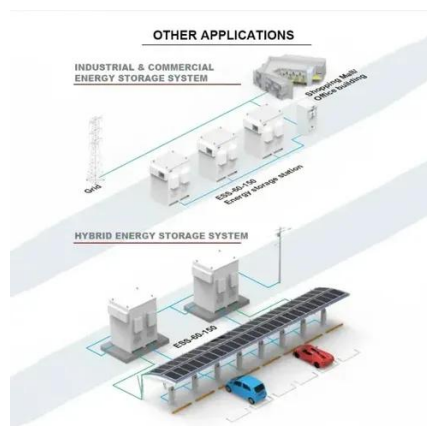


[Glass-to-Transparent Backsheet vs. Glass-to-Glass Solar ...](#)

These modules feature glass on both the front and back, sandwiching the solar cells between two layers of heat-treated, tempered glass. This design enhances the module's ...

[Glass-Glass or Mono-Glass Solar Panels? Key ...](#)

In this guide, we explain the differences between mono-glass and glass-glass (bifacial) panels. You'll see how they stack up for safety, ...



Single-glass versus double-glass: a deep dive into module ...

Among the current module products on the market, only single-glass modules are equipped with tempered glass. The choice of front and shear materials is critical in determining ...

Are Glass-Glass PV Modules Right for Your Project? How to ...

Glass-glass PV modules refer to photovoltaic panels in which the solar cells are encapsulated between two layers of glass, both on the front and



the back.

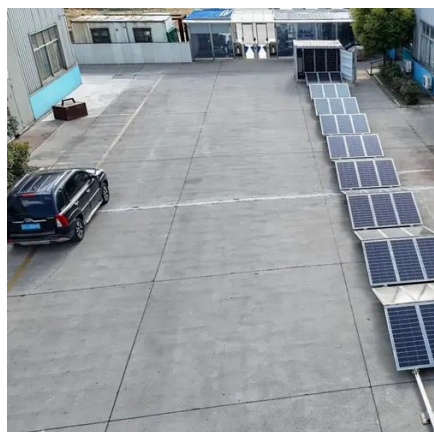


What are the differences between single-glass and double-glass solar

As the first layer of materials in the solar module structure, tempered glass can effectively protect the panel and solar cells against physical stress, snow, wind, dust and moisture etc, at the ...

Single Vs. Double Glass Solar Panels

To add a bit of complexity in purchase choices for solar panel buyers, there can be a toss-up between single and double/dual glass panels. So, which is better? Back in November we ...



Difference Between Single Glass & Double Glass Solar Panels

For years, single glass panels--often referred to as monofacial solar panels--have been a mainstay in the solar energy sector. Their one sheet of glass covers the solar cells and shields ...



What are the differences between single-glass and ...

As the first layer of materials in the solar module structure, tempered glass can effectively protect the panel and solar cells against physical stress, ...



Glass-to-Transparent Backsheet vs. Glass-to-Glass Solar Modules...

These modules feature glass on both the front and back, sandwiching the solar cells between two layers of heat-treated, tempered glass. This design enhances the module's ...

Glass-Glass PV Modules

Glass-Glass module designs are an old technology that utilises a glass layer on the back of modules in place of traditional polymer backsheets. They ...



Glass-Glass or Mono-Glass Solar Panels? Key Differences ...

In this guide, we explain the differences between mono-glass and glass-glass (bifacial) panels. You'll see how they stack up for safety, weight, weather, and more.



Difference Between Single Glass & Double Glass ...

For years, single glass panels--often referred to as monofacial solar panels--have been a mainstay in the solar energy sector. Their one ...



Glass-Glass vs Mono-Glass Solar Panels: Solving ...

Need help choosing between mono-glass ABC solar panels and double-glass panels? Compare weight, power output, fire ratings, ...

Glass-Glass vs Mono-Glass Solar Panels: Solving Your Solar ...

Need help choosing between mono-glass ABC solar panels and double-glass panels? Compare weight, power output, fire ratings, and costs. Find which design fits your ...



Single Vs. Double Glass Solar Panels

To add a bit of complexity in purchase choices for solar panel buyers, there can be a toss-up between single and double/dual glass panels. So, which ...



Glass-Glass PV Modules

Glass-Glass module designs are an old technology that utilises a glass layer on the back of modules in place of traditional polymer backsheets. They were heavy and expensive allowing ...

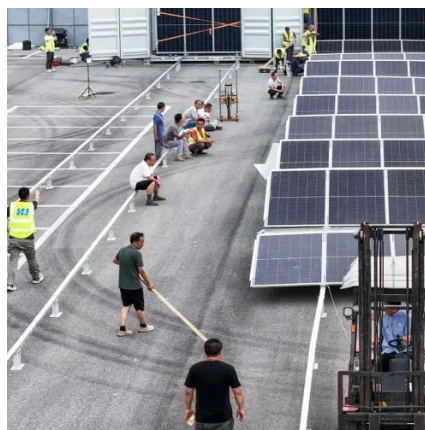


DCR and Non-DCR Solar Panel Technologies

On the other hand, non-DCR solar panels are considered by their traditional single-glass design. While they may not offer the enhanced durability of ...

DCR and Non-DCR Solar Panel Technologies

On the other hand, non-DCR solar panels are considered by their traditional single-glass design. While they may not offer the enhanced durability of DCR panels, non-DCR variants remain a ...





Contact Us

For inquiries, pricing, or partnerships:

<https://www.sccd-sk.eu>

Phone: +32 2 808 71 94

Email: info@sccd-sk.eu

Scan QR code for WhatsApp.

