



What are the energy storage power stations in the Belarusian desert





Overview

2651 small hydroelectric power stations with total installed electrical capacity of 7.018 MW. 50 wind power plants with total installed electrical capacity of 102.7 MW. 118 heat pumps, with total heat capacity of 10 MW th. 63 solar PV plants with total electrical capacity of 154.3.

2651 small hydroelectric power stations with total installed electrical capacity of 7.018 MW. 50 wind power plants with total installed electrical capacity of 102.7 MW. 118 heat pumps, with total heat capacity of 10 MW th. 63 solar PV plants with total electrical capacity of 154.3.

Most energy in Belarus is cheap fossil gas from Russia, [1] and Belarus is a net energy importer. According to IEA, the energy import vastly exceeded the energy production in 2015, describing Belarus as one of the world's least energy sufficient countries in the world. [2] Belarus imports oil from.

Energy in Belarus describes energy and electricity production, consumption and import in Belarus. Belarus is a net energy importer. According to IEA, the energy import vastly exceeded the energy production in 2015, describing Belarus as one of the world's least energy sufficient countries in the.

Berezovskaya (Belarus) power station (Березовская ГРЭС, пиково-резервный энергоисточник (ПРЭИ)) is an operating power station of at least 1380-megawatts (MW) in Beloozersk, Brest, Belarus. Loading map. Unit-level coordinates (WGS 84): CHP is an abbreviation for Combined Heat and Power. It is a.

Most energy in Belarus is cheap fossil gas from Russia, [1] and Belarus is a net energy importer. According to IEA, the energy import vastly exceeded the energy production in 2015, describing Belarus as one of the world's least energy sufficient countries in the world. [2] Belarus imports oil from.

The Law on Renewable Energy Sources regulates relations among all entities involved in the use of RESs for electricity production and consumption, as well as production of renewables for use by renewable energy plants. The creation of new facilities, and modernisation and reconstruction of existing.

That's exactly what the Minsk Energy Storage Plant achieves through its cutting-



edge battery systems. As Belarus' first utility-scale energy storage project, it's become the poster child for Eastern Europe's clean energy transition – and frankly, it's about time we talked about it! Who's Reading. How many power plants are in Belarus?

Belarus has 24 utility-scale power plants in operation, with a total capacity of 8534.9 MW. This data is a derivative set of data gathered by source mentioned below. Global Energy Observatory/Google/KTH Royal Institute of Technology in Stockholm/Enipedia/World Resources Institute/database.earth.

How much energy does Belarus use?

Primary energy use in Belarus was 327 TWh or 34 TWh per million persons in 2008. Primary energy use per capita in Belarus in 2009 (34 MWh) was slightly more than in Portugal (26 MWh) and about half of the use in Belgium (64 MWh) or Sweden (62 MWh). Electricity consumed in 2021 was 32.67 billion kWh, 3,547 kWh per capita.

How many solar energy installations are there in Belarus?

287 solar heating installations with total heat capacity of 3.9 MW th. Hydropower resources in Belarus are deemed scarce, though there are opportunities for small hydro in the northern and central parts of the country.

What is the solar power potential of Belarus?

Solar power potential is significant, mainly in the south and southeast of the country. In terms of global horizontal irradiation (GHI) and direct normal irradiation (DNI), most of Belarus receives only 1 100 kilowatt hours per square metre (kWh/m²) to 1 400 kWh/m² of GHI, and around 1 000 kWh/m² of DNI.



What are the energy storage power stations in the Belarusian desert

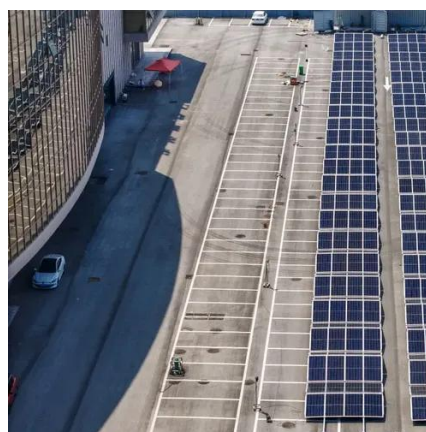


[Power Plants in Belarus \(Map\), database.earth](#)

Data and information about power plants in Belarus plotted on an interactive map.

Energy in Belarus

Because non-nuclear thermal power plants are ramped up and down depending on heat requirements, and nuclear is not very flexible, increased battery storage has been suggested.



ENERGY PROFILE Belarus

primary energy supply. Energy trade includes all commodities in Chapter 27 of the armonised System (HS). Capacity utilisation is calculated as annual generation divided by year-end

Minsk Energy Storage Plant: Powering Belarus' Sustainable Future

That's exactly what the Minsk Energy Storage Plant achieves through its cutting-edge battery systems. As Belarus' first utility-scale energy



storage project, it's become the ...

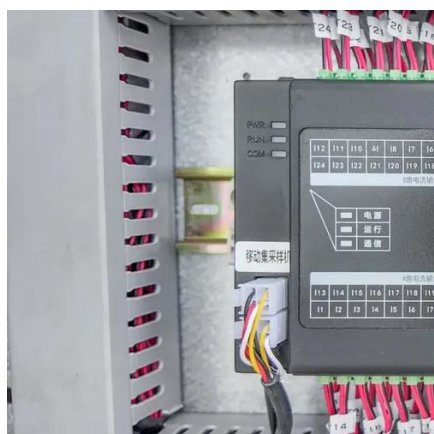


List of power stations in Belarus

Because non-nuclear thermal power plants are ramped up and down depending on heat requirements, and nuclear is not very flexible, increased battery storage has been suggested.

Berezovskaya (Belarus) power station

To access additional data, including an interactive map of gas-fired power stations, a downloadable dataset, and summary data, please visit the Global Oil and Gas Plant Tracker ...



Sustainable development - Belarus energy profile - Analysis

The main emphasis in Belarus is on increasing the use of wood fuel, as it requires less capital investment than other types of renewable energy. Fuel from woody biomass (i.e. rough wood, ...



Renewable energy storage devices Belarus

In this paper, we identify key challenges and limitations faced by existing energy storage technologies and propose potential solutions and directions for future research and ...



Energy storage use efficiency in the context of Belorussian ...

The paper provides an efficiency assessment of lithium-ion energy storage unit installation in the Belorussian power system at thermal power plants, in power supply and distribution networks, ...



Contact Us

For inquiries, pricing, or partnerships:

<https://www.sccd-sk.eu>

Phone: +32 2 808 71 94

Email: info@sccd-sk.eu

Scan QR code for WhatsApp.

