



What are the power data transmission base stations





Overview

In the area of wireless computer networking, a base station is a radio receiver/transmitter that serves as the hub of the local wireless network, and may also be the gateway between a wired network and the wireless network. It typically consists of a low-power transmitter and .

Essential to this infrastructure are the 5G base stations that serve as the nodes facilitating this high-speed data transmission. These base stations rely heavily on high-frequency power delivery networks (PDNs) to ensure that they operate efficiently and.

Essential to this infrastructure are the 5G base stations that serve as the nodes facilitating this high-speed data transmission. These base stations rely heavily on high-frequency power delivery networks (PDNs) to ensure that they operate efficiently and.

The idea of base stations is anchored in their function to provide coverage, capacity, and connectivity, hence allowing for extending the working capabilities of mobile phones and other radio gear. What is Base Station?

What is Base Station?

A base station represents an access point for a wireless.

Base station (or base radio station, BS) is – according to the International Telecommunication Union 's (ITU) Radio Regulations (RR) [1] – a " land station in the land mobile service." A base station is called node B in 3G, eNB in LTE (4G), and gNB in 5G. The term is used in the context of mobile.

A base station is a critical component in a telecommunications network. A fixed transceiver that acts as the central communication hub for one or more wireless mobile client devices. In the context of cellular networks, it facilitates wireless communication between mobile devices and the core.

What is a base station?

Simply put, a base station (BS) is a wireless transceiver device in a mobile communication network that provides wireless coverage and communicates with mobile terminals like your phone. It acts as a bridge, connecting your phone to a



vast communication network to ensure.

The advent of 5G technology marks a transformative era in telecommunications, promising faster speeds, lower latency, and the ability to connect a vast number of devices efficiently. Essential to this infrastructure are the 5G base stations that serve as the nodes facilitating this high-speed data.

Base stations and cell towers are critical components of cellular communication systems, serving as the infrastructure that supports seamless mobile connectivity. These structures facilitate the transmission and reception of signals between mobile devices and the wider network, enabling voice. What is a base station in a telecommunications network?

A base station is a critical component in a telecommunications network. A fixed transceiver that acts as the central communication hub for one or more wireless mobile client devices. In the context of cellular networks, it facilitates wireless communication between mobile devices and the core network.

How much power does a base station have?

Maximum base station power is limited to 38 dBm output power for Medium-Range base stations, 24 dBm output power for Local Area base stations, and to 20 dBm for Home base stations. This power is defined per antenna and carrier, except for home base stations, where the power over all antennas (up to four) is counted.

What is base station Power?

Base station power refers to the output power level of base stations, which is defined by specific maximum limits (24 dBm for Local Area base stations and 20 dBm for Home base stations) and includes tolerances for deviation from declared power levels, as well as specifications for total power control dynamic range. How useful is this definition?

.

What is a base station in a Wi-Fi network?

The base station in a Wi-Fi network is a device that connects to an internet service provider (ISP) and enables wireless communication between devices such as computers, smartphones, and tablets. It acts as a central hub for the network, transmitting and receiving data between the devices and the ISP.



What are the power data transmission base stations



What Is A Base Station?

A base station is an integral component of wireless communication networks, serving as a central point that manages the ...

base station

Base stations are fundamental to the operation of mobile communication systems, acting as the crucial link between mobile devices and the wider network. They enable seamless ...



Base station

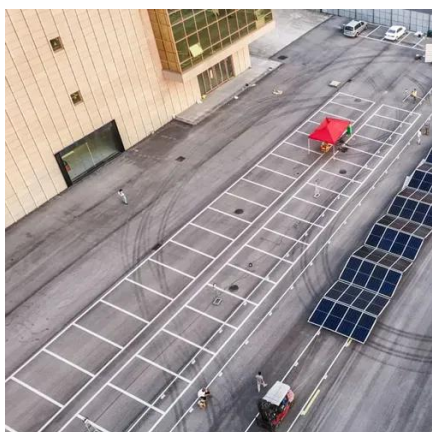
In the area of wireless computer networking, a base station is a radio receiver/transmitter that serves as the hub of the local wireless network, and may also be the gateway between a wired ...

5G Base Stations: Electromigration in High-Frequency Power ...

Essential to this infrastructure are the 5G base stations that serve as the nodes facilitating this high-speed data transmission. These base stations



rely heavily on high ...



[What is a Base Station in Telecommunications?](#)

Discover the role and functionality of a base station in telecommunications networks. Learn how these critical components manage communication ...

[Cellular Networks, Cells, and Base Stations -- EITC](#)

The network is distributed over land areas called cells, each served by at least one fixed-location transceiver (short for transmitter-receiver - a device that both transmits and ...



[What Is a Base Station? Exploring the Core of 5G ...](#)

This article explains the definition, structure, types, and principles of base stations, while highlighting the critical role of thermal ...





Power Base Station

Maximum base station power is limited to 38 dBm output power for Medium-Range base stations, 24 dBm output power for Local Area base stations, and to 20 dBm for Home base stations.



What is a Base Station in Telecommunications?

Discover the role and functionality of a base station in telecommunications networks. Learn how these critical components manage communication between mobile devices and the network, ...



Base station

OverviewComputer networkingLand surveyingWireless communicationsSee also

In the area of wireless computer networking, a base station is a radio receiver/transmitter that serves as the hub of the local wireless network, and may also be the gateway between a wired network and the wireless network. It typically consists of a low-power transmitter and wireless router.



Base Stations

The present-day tele-space is incomplete without the base stations as these constitute an important part of the modern-day scheme of wireless communications. They are ...



Base Stations and Cell Towers: The Pillars of Mobile Connectivity

Base stations use antennas mounted on cell towers to send and receive radio signals to and from mobile devices within their coverage area. This communication enables ...



What Is A Base Station?

A base station is an integral component of wireless communication networks, serving as a central point that manages the transmission and reception of signals between ...

What Is a Base Station? Exploring the Core of 5G Networks and ...

This article explains the definition, structure, types, and principles of base stations, while highlighting the critical role of thermal interface materials in base station heat ...





Contact Us

For inquiries, pricing, or partnerships:

<https://www.sccd-sk.eu>

Phone: +32 2 808 71 94

Email: info@sccd-sk.eu

Scan QR code for WhatsApp.

