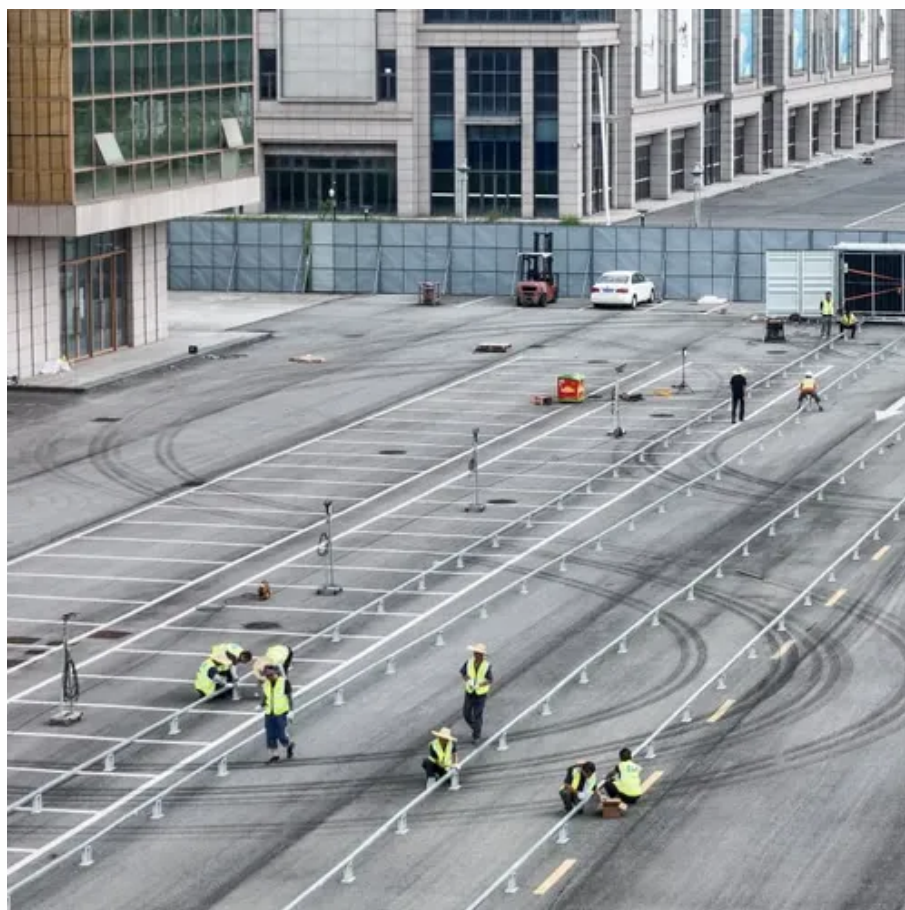




What are the ultimate outdoor power supplies





What are the ultimate outdoor power supplies



[Methylene Blue Side Effects: Common, Severe, Long Term](#)

Learn about the side effects of methylene blue, from common to rare, for consumers and healthcare professionals.

[Methylene Blue: Uses, Dosage, Side Effects, Warnings](#)

Methylene blue is used to treat methemoglobinemia, malaria, and low-dose methylene blue for Alzheimer's disease is currently being researched. Includes side effects, ...



[What are the benefits of methylene blue? A medical review](#)

Official answer: Methylene blue is a common dye that is known to have antioxidant, antidepressant, antimalarial, neuroprotective, and

[Omega-3 Side Effects: Common, Severe, Long Term](#)

Learn about the side effects of Omega-3 (omega-3 polyunsaturated fatty acids), from common to rare, for consumers and healthcare professionals.



[Gold Bond Ultimate Healing and Rash: What Users Say](#)

See what Gold Bond Ultimate Healing users say about rash. Out of 14 reviews, 4 (28.6%) mention rash. Read firsthand experiences.



[Methylene Blue Dosage Guide + Max Dose, Adjustments](#)

Detailed Methylene Blue dosage information for adults and children. Includes dosages for Methemoglobinemia; plus renal, liver and dialysis adjustments.



[Gold Bond Ultimate Healing and Itching: What Users Say](#)

See what Gold Bond Ultimate Healing users say about itching. Out of 14 reviews, 3 (21.4%) mention itching. Read firsthand experiences.





Phazyme Uses, Side Effects & Warnings

Phazyme: side effects, dosage, interactions, FAQs, reviews. Used for: endoscopy or radiology premedication, functional gastric disorder, gas, postoperative gas pains



Does methylene blue kill cancer cells

Official answer: While not a conventional chemotherapy agent, research suggests that methylene blue can kill cancer cells under specific

Gas-X Ultimate Strength Interactions

Gas-X Ultimate Strength Interactions There are 5 drugs known to interact with Gas-X Ultimate Strength (simethicone). Of the total drug interactions, 5 are moderate.

 **TAX FREE**

ENERGY STORAGE SYSTEM

Product Model
HJ-ESS-215A(100KW/215KWh)
HJ-ESS-115A(50KW 115KWh)

Dimensions
1600*1280*2200mm
1600*1200*2000mm

Rated Battery Capacity
215KWH/115KWH

Battery Cooling Method
Air Cooled/Liquid Cooled





Contact Us

For inquiries, pricing, or partnerships:

<https://www.sccd-sk.eu>

Phone: +32 2 808 71 94

Email: info@sccd-sk.eu

Scan QR code for WhatsApp.

