



What does 12vdc inverter mean





Overview

A power inverter, inverter, or invertor is a device or circuitry that changes (DC) to (AC). The resulting AC frequency obtained depends on the particular device employed. Inverters do the opposite of which were originally large electromechanical devices converting AC to DC.

A 12V inverter is a device that converts 12V DC power from batteries or solar panels into 120V/230V AC electricity, enabling the use of household appliances in off-grid or mobile setups.

A 12V inverter is a device that converts 12V DC power from batteries or solar panels into 120V/230V AC electricity, enabling the use of household appliances in off-grid or mobile setups.

A 12V inverter is a device that converts 12V DC power from batteries or solar panels into 120V/230V AC electricity, enabling the use of household appliances in off-grid or mobile setups. Commonly used in cars, RVs, boats, and solar systems, inverters come in modified sine wave (for basic devices).

A 12-volt DC power inverter is an essential device for converting 12V direct current (DC) from a battery into 120V alternating current (AC), allowing you to power standard household appliances on the go. Whether you need to charge a laptop in your car, run a small refrigerator while camping, or

A power inverter, inverter, or invertor is a power electronic device or circuitry that changes direct current (DC) to alternating current (AC). [1] The resulting AC frequency obtained depends on the particular device employed. Inverters do the opposite of rectifiers which were originally large.

Power inverters, or simply 'inverters', are transformers that will convert a DC current into an AC current, allowing you to run higher voltage equipment from a battery or other DC power source. Inverters have become increasingly popular over the past decade, allowing motorhome, campervan, caravan.

A 12V inverter is a device that transforms 12V battery power from direct current (DC) to alternating current (AC). This AC power is used to operate various electrical devices. 12V Inverters are commonly used in small cars, boats, and in homes and small businesses appliances as the power required.



What does a power inverter do, and what can I use one for?

A power inverter changes DC power from a battery into conventional AC power that you can use to operate all kinds of devices . electric lights, kitchen appliances, microwaves, power tools, TVs, radios, computers, to name just a few. You.



What does 12vdc inverter mean



Power inverter

A power inverter, inverter, or invertor is a power electronic device or circuitry that changes direct current (DC) to alternating current (AC). [1] The resulting AC frequency obtained depends on ...

[What Is A 12V Inverter And Where Is It Used?](#)

A 12V inverter is a device that converts 12V DC power from batteries or solar panels into 120V/230V AC electricity, enabling the use of household appliances in off-grid or mobile setups.



[Power Inverters: What Are They & How Do They ...](#)

What is an Inverter? An inverter (or power inverter) is defined as a power electronics device that converts DC voltage into AC voltage. ...



[How DC/AC Power Inverters Work . HowStuffWorks](#)

It's important to know your vehicle's voltage because the voltage rating of the inverter you select should match the voltage of the battery. In



either case, the battery provides ...

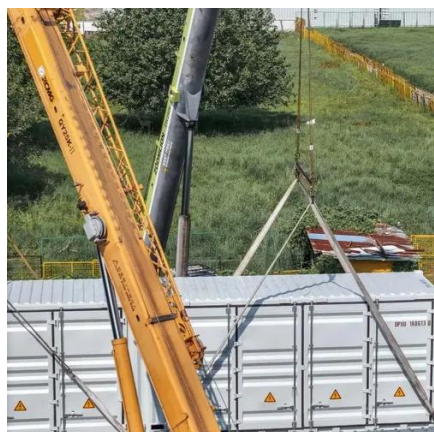


Inverters Guide

Power inverters, or simply 'inverters', are transformers that will convert a DC current into an AC current, allowing you to run higher voltage equipment from a battery or ...

Power inverters 12v

This type of inverter is compact in size and easy to connect, suitable for 12V battery systems, and can provide stable AC power for ...



12 Volt DC Power Inverter: In-Depth Learning and Buying Guide

A 12V DC power inverter is a device that converts low-voltage direct current (DC) power from a 12V battery (such as a car battery or deep-cycle battery) into 120V alternating ...



[Power Inverters: What Are They & How Do They Work?](#)

What is an Inverter? An inverter (or power inverter) is defined as a power electronics device that converts DC voltage into AC voltage. While DC power is common in ...



Inverters Guide

Power inverters, or simply 'inverters', are transformers that will convert a DC current into an AC current, allowing you to run higher ...

[5 Things You Need to Know About 12V Inverters , L& T-SuFin](#)

If you are looking to buy a 12v inverter for residential or commercial use but need help deciding what will work best for you, we are here to make it easy for you. We have ...



[How DC/AC Power Inverters Work , HowStuffWorks](#)

It's important to know your vehicle's voltage because the voltage rating of the inverter you select should match the voltage of the ...



[5 Things You Need to Know About 12V Inverters , L& T-SuFin](#)

Using 12V Inverters Safety Tips Final Words Buy 12V Inverters Online at L& T-SuFin A 12V inverter is a device that transforms 12V battery power from direct current (DC) to alternating current (AC). This AC power is used to operate various electrical devices. 12V Inverters are commonly used in small cars, boats, and in homes and small businesses appliances as the power required for such devices is usually less than 1000 watts. In See more on IntsuFin



Searches you might like

12v to 120v inverter what is a inverter generator 12v transformer 12 volt inverter Power Inverters

What does a power inverter do, and what can I use one for?

The inverter draws its power from a 12 Volt battery (preferably deep-cycle), or several batteries wired in parallel. The battery will need to be recharged as the power is drawn out of it by the ...



[How Does a 12V to 120V Inverter Work?](#)

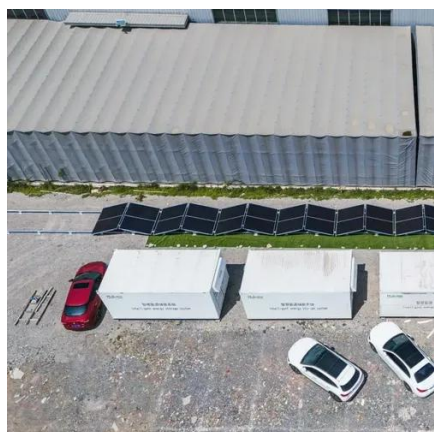
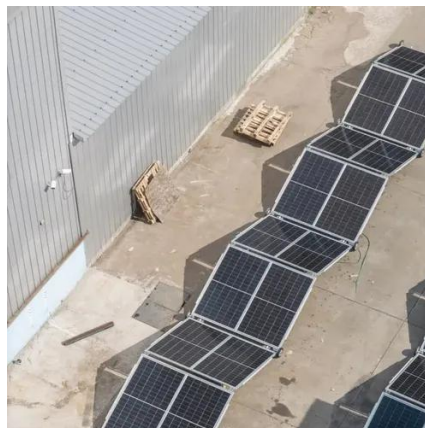
The main function of a 12v to 120V inverter is to convert direct current (DC) into alternating current (AC), allowing common household appliances and equipment to operate at ...

[What does a power inverter do, and what can I use one for?](#)

The inverter draws its power from a 12 Volt battery (preferably deep-cycle), or several batteries wired in parallel. The battery will need to be recharged as the power is drawn out of it by



the ...



Power inverters 12v

This type of inverter is compact in size and easy to connect, suitable for 12V battery systems, and can provide stable AC power for laptops, small appliances, lighting ...

Power inverter

Overview
Input and output
Batteries
Applications
Circuit description
Size
History
See also

A power inverter, inverter, or invertor is a power electronic device or circuitry that changes direct current (DC) to alternating current (AC). The resulting AC frequency obtained depends on the particular device employed. Inverters do the opposite of rectifiers which were originally large electromechanical devices converting AC to DC.



How Does a 12V to 120V Inverter Work?

The main function of a 12v to 120V inverter is to convert direct current (DC) into alternating current (AC), allowing common household ...



[12 Volt DC Power Inverter: In-Depth Learning and ...](#)

A 12V DC power inverter is a device that converts low-voltage direct current (DC) power from a 12V battery (such as a car battery or ...





Contact Us

For inquiries, pricing, or partnerships:

<https://www.sccd-sk.eu>

Phone: +32 2 808 71 94

Email: info@sccd-sk.eu

Scan QR code for WhatsApp.

