



What does esc represent at the battery cabinet site





Overview

That's essentially what an Energy Storage Container (ESC) is—a modular, plug-and-play system designed to store energy for later use. These containers are the backbone of renewable energy grids, industrial sites, and even remote communities needing reliable power.

That's essentially what an Energy Storage Container (ESC) is—a modular, plug-and-play system designed to store energy for later use. These containers are the backbone of renewable energy grids, industrial sites, and even remote communities needing reliable power.

That's essentially what an Energy Storage Container (ESC) is—a modular, plug-and-play system designed to store energy for later use. These containers are the backbone of renewable energy grids, industrial sites, and even remote communities needing reliable power. Think of them as the Swiss Army.

. Never enclose batteries or bat e have been taken to ensure the system arrives safe and undamaged. However, upon receipt, you should inspect the entire shipment, including the crate and any ill IMMEDIATELY while the carrier representative is still present. Insure that all items re accounted for.

Energy storage cabinets are essential devices designed for storing and managing electrical energy across various applications. These cabinets transform electrical energy into chemical or other forms of energy for later release. As we advance towards integrating more renewable energy sources, the.

An illuminated service electronic stability control (ESC) light typically means there's an ESC system malfunction or the ESC system is trying to restore vehicle stability. Oversteering and understeering can cause the ESC warning lamp to flash. ABS issues, faulty sensors, wiring problems, and.

Sep 22, 2024 · The energy storage cabinet encompasses a sophisticated array of components and technologies designed to facilitate the effective storage and management of electricity What does the energy storage cabinet mainly include?

Sep 13, 2024 · The energy storage cabinet encompasses multiple.



What Is Electronic Stability Control (ESC)?

When Does the Electronic Stability Control System Activate?

What Does the 'Service Electronic Stability Control' Light Indicate?

Is It Safe to Drive with the Service ESC Warning Light On?

What Are the Benefits of ESC?

How Much Does It Cost to Fix the. How does an ESC system work?

An Electronic Stability Control (ESC) system works by using a series of speed sensors and an automatic braking system. The sensors detect when a vehicle is likely to skid or lose control, and the brakes are applied to prevent this from happening.

What does 'Service ESC' mean?

If your car's message center displays 'Service Electronic Stability Control' or 'Service ESC', it means the ESC system isn't performing properly. One of the sensors or another part of the system is malfunctioning. While you don't have to stop using your car immediately, you should be cautious when driving.

What does service ESC light mean?

Service ESC light means that the Electronic Stability Control system isn't working properly and may not engage when you need it most. Fixing the problem requires the skilled hands of a professional as dealing with the diagnosis and sensor failure can be too complex for a DIY mechanic. Why Is Electronic Stability Control So Important?

.

How do ESC lights work?

Depending on the direction, the ESC system will activate either the right or left front brakes to restore stability. For example, if the vehicle spins out of control while making a left turn, the ESC system will engage the right front brakes. The service ESC light will also illuminate once the system detects understeering.



What does esc represent at the battery cabinet site



Energy Storage Cabinets: Key Components, Types, and Future ...

Energy storage cabinets help in balancing energy supply, improving grid stability, and offering backup power during outages. They are crucial in managing energy from ...

What Does Service ESC Mean & How to Fix It

If you see the ESC light or the "Service ESC" warning on your dashboard, it could mean an ESC issue. It's ...



Should You Worry About an Illuminated Service ...

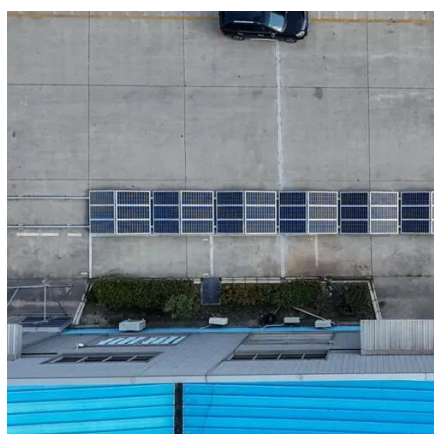
An illuminated service electronic stability control (ESC) light typically means there's an ESC system malfunction or the ESC system is ...

Energy Storage Container (ESC): The Power Bank of Modern ...

That's essentially what an Energy Storage Container (ESC) is--a modular, plug-and-play system designed to store energy for later use.



These containers are the backbone of ...



BC58 Battery Cabinet Installation, Operation, & Maintenance ...

The option provides functional access to the equipment circuit breaker via a handle located on the exterior of a cabinet door that is physically connected to the circuit breaker in the cabinet's ...

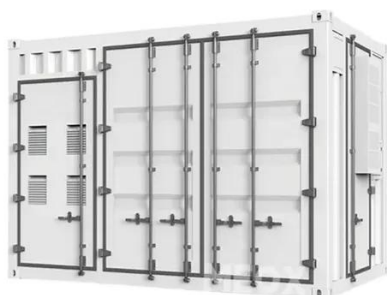
[Why Is Your Service Electronic Stability Control Light On?](#)

An illuminated service ESC light means the ESC system isn't working correctly, and you should get it fixed. This can be due to faulty wires, bad sensors, or damaged control modules.



[Should You Worry About an Illuminated Service ESC Light?](#)

An illuminated service electronic stability control (ESC) light typically means there's an ESC system malfunction or the ESC system is trying to restore vehicle stability. ...





What Is Electronic Stability Control and How Does It Work?

For a modern vehicle, the ESC system for the car is a series of speed sensors and an automatic braking system. Together, the sensors determine when the vehicle is likely to skid or lose ...



What Does Service ESC Mean & How to Fix It

If you see the ESC light or the "Service ESC" warning on your dashboard, it could mean an ESC issue. It's important to take it seriously and get professional help to identify and ...



Operation of Energy Storage Battery Cabinets on the Grid Side

Energy storage battery cabinets are integral components of energy storage systems. Their operation on the grid side involves energy charge/discharge management, ...



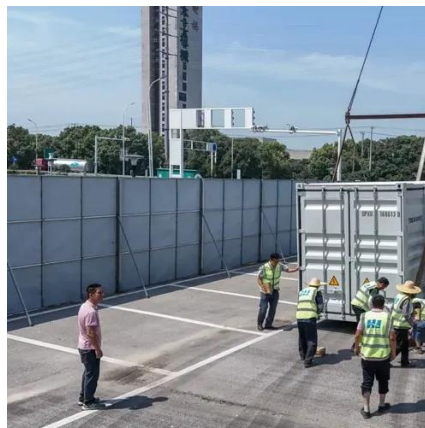
Energy Storage Cabinets: Key Components, ...

Energy storage cabinets help in balancing energy supply, improving grid stability, and offering backup power during outages. They ...



What Is Electronic Stability Control and How Does ...

For a modern vehicle, the ESC system for the car is a series of speed sensors and an automatic braking system. Together, the sensors ...



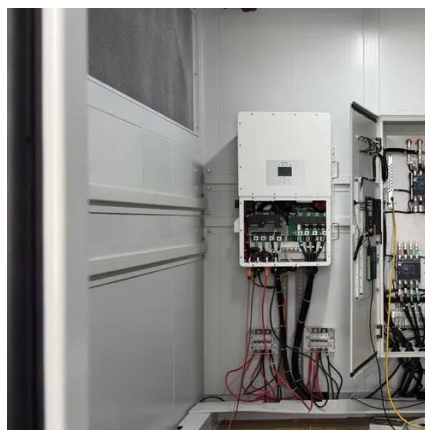
What does esc represent at the battery cabinet site

Jun 15, 2025 · Battery rack cabinets are modular enclosures designed to securely house and organize multiple batteries in industrial, telecom, or renewable energy systems.



Service Electronic Stability Control: What It Means & How to Fix It

Stability Control (ESC) is a crucial safety feature in modern vehicles, designed to help maintain control during sudden maneuvers or slippery road conditions. When the « ...



Service Electronic Stability Control: What It Means & How to Fix It

Stability Control (ESC) is a crucial safety feature in modern vehicles, designed to help maintain control during ...





Why Is Your Service Electronic Stability Control ...

An illuminated service ESC light means the ESC system isn't working correctly, and you should get it fixed. This can be due to faulty wires, bad ...





Contact Us

For inquiries, pricing, or partnerships:

<https://www.sccd-sk.eu>

Phone: +32 2 808 71 94

Email: info@sccd-sk.eu

Scan QR code for WhatsApp.

