



What does the base station communication equipment in the computer room include





Overview

In the area of wireless computer networking, a base station is a radio receiver/transmitter that serves as the hub of the local wireless network, and may also be the gateway between a wired network and the wireless network. It typically consists of a low-power transmitter and.

In the area of wireless computer networking, a base station is a radio receiver/transmitter that serves as the hub of the local wireless network, and may also be the gateway between a wired network and the wireless network. It typically consists of a low-power transmitter and.

A base transceiver station (BTS) or a baseband unit[1] (BBU) is a piece of equipment that facilitates wireless communication between user equipment (UE) and a network. UEs are devices like mobile phones (handsets), WLL phones, computers with wireless Internet connectivity, or antennas mounted on.

A Base Transceiver Station, commonly known as BTS, is a critical piece of equipment in wireless communication networks. It serves as the primary point of contact between user devices, such as mobile phones, computers with wireless connectivity or other wireless-enabled devices and the broader.

A base station represents an access point for a wireless device to communicate within its coverage area. It usually connects the device to other networks or devices through a dedicated high bandwidth wire or fiber optic connection. Base stations typically have a transceiver, capable of sending and.

A base station is a critical component of wireless communication networks. It serves as the central point of a network that connects various devices, such as smartphones, tablets, and computers. The base station transmits and receives signals, ensuring seamless communication over radio frequencies.

A base station can refer to any of the following: 1. In the computer networking realm, a base station is the central hub for wireless network communication between computers. Today, these types of base station are commonly called a wireless router. 2. Alternatively called the cell tower or cell.

A base station plays a pivotal role in the realm of telecommunications, acting as



the cornerstone of connectivity. It enables seamless communication by linking various wireless devices to broader networks, ensuring that data flows efficiently from one point to another. A base station is an integral. What is a base station in a computer network?

In the computer networking realm, a base station is the central hub for wireless network communication between computers. Today, these types of base station are commonly called a wireless router. 2. Alternatively called the cell tower or cell site, a base station is a tall tower equipped with electronics that transmit data to and cellular phones.

What is a base station in telecommunications?

In telecommunications, a base station is a fixed transceiver that serves as the main communication point for one or more wireless mobile client devices. It not only connects wireless devices to each other but also links them to other networks or devices, often through dedicated high-bandwidth wired or fiber optic connections.

Why is a base station important in wireless communication?

A base station is fundamental in wireless communication, because it facilitates the connection between your device and the wider network. Without base stations, mobile data and voice services would be impossible, as there would be no infrastructure to handle the transmission of signals.

What is a wireless base station?

A base station represents an access point for a wireless device to communicate within its coverage area. It usually connects the device to other networks or devices through a dedicated high bandwidth wire of fiber optic connection. Base stations typically have a transceiver, capable of sending and receiving wireless signals;



What does the base station communication equipment in the computer

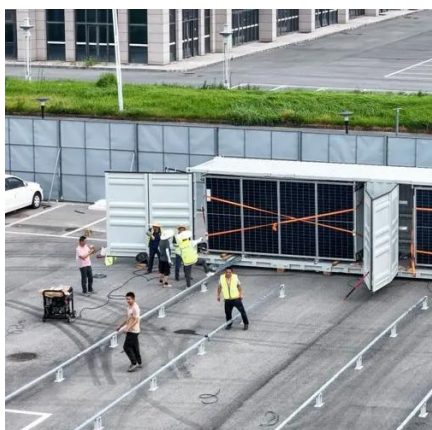


[What Is a Base Station? Definition and How It Works](#)

The internal components of a base station include an antenna system, transceiver units, and control equipment. Antennas are mounted at height to ensure adequate coverage.

Base Stations

They come in various types such as omnidirectional or sector antennas responding to diverse coverage needs. Controller and processor: These components manage the ...



Understanding Base Stations: The Backbone of Wireless Communication

In cellular networks, a base station typically consists of antennas, a transmitter/receiver system, and a base station controller (BSC). The base station is ...

Base Transceiver Stations (BTS)

It serves as the primary point of contact between user devices, such as mobile phones, computers with wireless connectivity or other wireless-enabled devices and the broader network ...



Base Transceiver Stations (BTS)

It serves as the primary point of contact between user devices, such as mobile phones, computers with wireless connectivity or other wireless ...



Base station

In the area of wireless computer networking, a base station is a radio receiver/transmitter that serves as the hub of the local wireless network, and may also be the gateway between a wired ...



Base Station's Role in Wireless Communication Networks

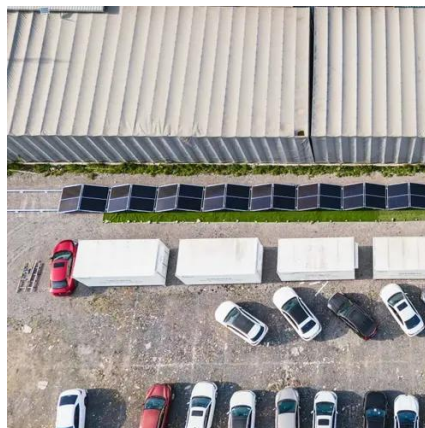
Base stations come in various types, including macro, micro, pico, and femto cells. Macro base stations cover large areas and support many users, commonly found in urban and rural ...





What Is a Base Station?

In the computer networking realm, a base station is the central hub for wireless network communication between computers. Today, ...



Base transceiver station

The BCF is implemented as a discrete unit or even incorporated in a TRX in compact base stations. The BCF provides an operations and maintenance (O& M) connection to the network ...

[Understanding Base Stations: The Backbone of Wireless ...](#)

In cellular networks, a base station typically consists of antennas, a transmitter/receiver system, and a base station controller (BSC). The base station is ...



Base Station Definition

In a computer networking context, a base station broadcasts a wireless signal that allows other devices to join a local network. However, the term is also commonly used in the ...



What Is a Base Station?

In the computer networking realm, a base station is the central hub for wireless network communication between computers. Today, these types of base station are commonly ...



What Is A Base Station?

A base station is a piece of equipment that facilitates wireless communication between devices and a network. It contains the necessary hardware and software to transmit ...



Base Station's Role in Wireless Communication Networks

Base stations come in various types, including macro, micro, pico, and femto cells. Macro base stations cover large areas and support many users, commonly found ...



What Is A Base Station?

A base station is a piece of equipment that facilitates wireless communication between devices and a network. It contains the necessary ...





Base station

In the area of wireless computer networking, a base station is a radio receiver/transmitter that serves as the hub of the local wireless network, ...



Base Stations

They come in various types such as omnidirectional or sector antennas responding to diverse coverage needs. Controller and ...

Base Station Definition

In a computer networking context, a base station broadcasts a wireless signal that allows other devices to join a local network. However, ...





Contact Us

For inquiries, pricing, or partnerships:

<https://www.sccd-sk.eu>

Phone: +32 2 808 71 94

Email: info@sccd-sk.eu

Scan QR code for WhatsApp.

