



What grid-connected box should I use for a 100kw solar inverter





What grid-connected box should I use for a 100kw solar inverter

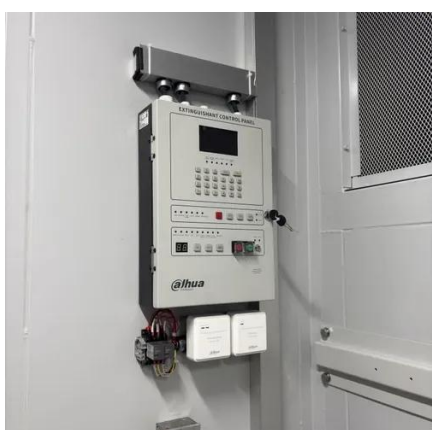


[How to Choose Combiner Box for Solar Panels](#)

This guide will teach you how to choose a combiner box for solar panels based on the size of the system, the voltage needed, and the environmental conditions for residential, ...

[The Ultimate Guide to Solar Combiner Boxes: ...](#)

A solar combiner box is a crucial component in solar energy systems, designed to consolidate the outputs of multiple solar panel ...



How To Size Solar Combiner Box?

In this guide, we'll walk you through everything you need to consider so that you can choose the perfect combiner box for your solar installation and keep your system running smoothly.

[How to connect a PV solar system to the utility grid ...](#)

An adequately sized PV service disconnect box must be used prior to making the connection between the junction box and the solar inverter.



By ...



What You Should Know about PV Combiner Box

A PV combiner box is the key to housing a joint connection between various panels and the entire system's inverter. Think of this box ...

100kw On Grid Solar Power System

It consists of 100kw of solar panels and 100kw of three-phase inverters and can generate between 350kWh and 550kWh of electricity per day, which ...



100kw solar system design

KW DESIGN GUIDELINES (Grid-Connected Solar PV Systems, no battery storage), which are applicable to grid-connected systems of all sizes. This document summarizes the design and ...



The Ultimate Guide to Solar Combiner Boxes: From Basics to ...

A solar combiner box is a crucial component in solar energy systems, designed to consolidate the outputs of multiple solar panel strings into a single output that connects to an ...



[How to Connect Solar Panels to a Combiner Box: ...](#)

Learn how to connect solar panels to a combiner box with step-by-step instructions and examples.

[How to Choose Combiner Box for Solar Panels](#)

This guide will teach you how to choose a combiner box for solar panels based on the size of the system, the voltage needed, and the ...



100kw On Grid Solar Power System

It consists of 100kw of solar panels and 100kw of three-phase inverters and can generate between 350kWh and 550kWh of electricity per day, which is ideal for use in large-scale commercial, or ...





[How to connect a PV solar system to the utility grid](#)

An adequately sized PV service disconnect box must be used prior to making the connection between the junction box and the solar inverter. By connecting on the Line side, it avoids de ...

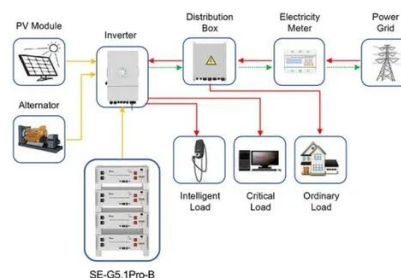


[What You Should Know about PV Combiner Box , CHINT global](#)

A PV combiner box is the key to housing a joint connection between various panels and the entire system's inverter. Think of this box as the heart of a seamless solar ...

[How to Choose the Right Combiner Box for Solar](#)

Learn how to choose the best combiner box for your solar system with tips on types, safety, expansion, and installation for all project sizes.



Application scenarios of energy storage battery products



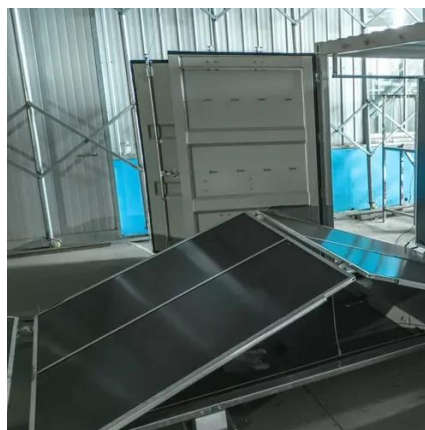
How to Connect Solar Panels to a Combiner Box: A Step-by-Step ...

Learn how to connect solar panels to a combiner box with step-by-step instructions and examples.



[Calculations for a Grid-Connected Solar Energy System](#)

The grid-connected system consists of a solar photovoltaic array mounted on a racking system (such as a roof-mount, pole mount, or ground mount), connected to a combiner box, and a ...



How To Size Solar Combiner Box?

In this guide, we'll walk you through everything you need to consider so that you can choose the perfect combiner box for your solar installation and ...



Contact Us

For inquiries, pricing, or partnerships:

<https://www.sccd-sk.eu>

Phone: +32 2 808 71 94

Email: info@sccd-sk.eu

Scan QR code for WhatsApp.

