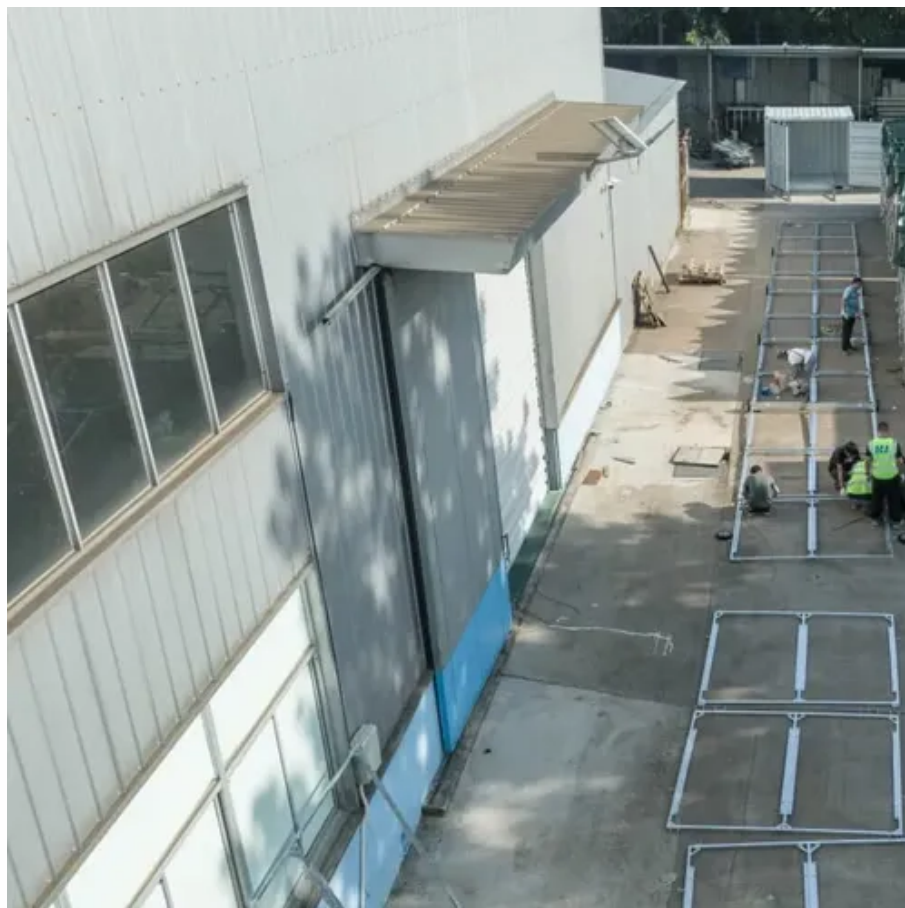




What is the base station power module used for





Overview

This term covers the whole power infrastructure at a telecom base station, including everything from power supplies and backup systems to energy storage. Power Supply Units: The main source of energy for telecom operations. Energy Storage: Batteries that store excess.

This term covers the whole power infrastructure at a telecom base station, including everything from power supplies and backup systems to energy storage. Power Supply Units: The main source of energy for telecom operations. Energy Storage: Batteries that store excess.

The idea of base stations is anchored in their function to provide coverage, capacity, and connectivity, hence allowing for extending the working capabilities of mobile phones and other radio gear. What is Base Station?

What is Base Station?

A base station represents an access point for a wireless.

As a result, a variety of state-of-the-art power supplies are required to power 5G base station components. Modern FPGAs and processors are built using advanced nanometer processes because they often perform calculations at fast speeds using low voltages (<0.9 V) at high current from compact.

Telecom base stations are at the heart of global communication networks, providing the backbone for cellular and internet services. Over the years, various terms have been used to describe the energy solutions that keep these stations running smoothly. This article takes a closer look at some of.

A power module or power electronic module provides the physical containment for several power components, usually power semiconductor devices. These power semiconductors (so-called dies) are typically soldered or sintered on a power electronic substrate that carries the power semiconductors.

The 5G rollout is changing how we connect, but powering micro base stations—those small, high-impact units boosting coverage in cities and beyond—is no small feat. These stations need reliable, durable, and scalable power to deliver



5G's promise of speed and low latency. At NextG Power, we're.

In today's connected world, telecom base stations form the invisible foundation that enables mobile communication anytime, anywhere. Whether making a phone call, watching a video, or using mobile data, every interaction depends on base stations to transmit and receive wireless signals efficiently.



What is the base station power module used for



What is a base station energy storage power station , NenPower

A base station energy storage power station refers to a facility designed to store energy generated from various renewable sources and supply it efficiently to power base ...

Base Stations

Power Supply: The power source provides the electrical energy to base station elements. It often features auxiliary power supply ...



base station power systems

With the rapid deployment of 5G networks and the growing popularity of IoT applications, the telecom power and environment monitoring system has become a critical foundation for ...



Power Base Station

If an adjacent base station transmission is detected under certain conditions, the maximum allowed Home base station output power is reduced in proportion to how weak the adjacent ...



Power module

High power IGBTs (here a 3300V, 1200A switch) are obtained by connecting tens of dies in parallel in a power module. A power module or power ...



Different English Terms for Telecom Base Station Power Systems

Telecom base stations are at the heart of global communication networks, providing the backbone for cellular and internet services. Over the years, various terms have been used ...



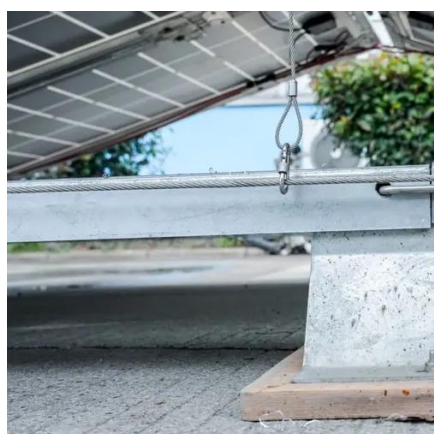
5G Base Station Antenna Module in the Real World: 5 Uses You'll

These modules are the backbone of next-generation wireless infrastructure, enabling faster speeds, lower latency, and more reliable connections. From urban centers to ...



5G Base Station Power Supply System: NextG Power's Cutting ...

IP65 Waterproof Power Modules (2000W or 3000W): Our modules pump out 2000W or 3000W, so you can power anything from a small indoor station to a busy urban hub. With an IP65 ...



[Selecting the Right Supplies for Powering 5G Base Stations](#)

These solutions are specially designed to power high performance RF systems with the highest power conversion efficiency and density without adding noise or interference to the radio ...

[Powering 5G Infrastructure with Power Modules , RECOM](#)

Discover power module solutions for 5G infrastructure delivering high power density, efficiency, and reliability for base stations and small cell deployments.



[What is a base station energy storage power ...](#)

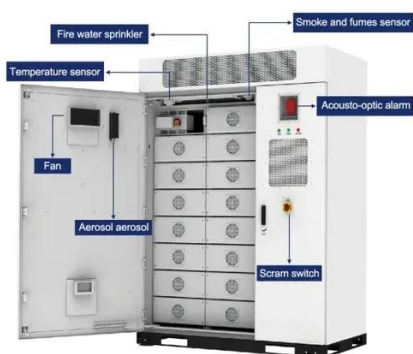
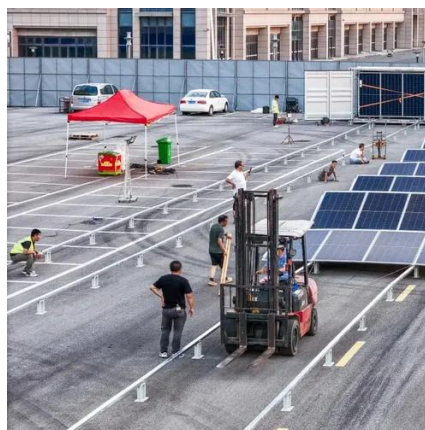
A base station energy storage power station refers to a facility designed to store energy generated from various renewable sources and ...





Power module

High power IGBTs (here a 3300V, 1200A switch) are obtained by connecting tens of dies in parallel in a power module. A power module or power electronic module provides the physical ...

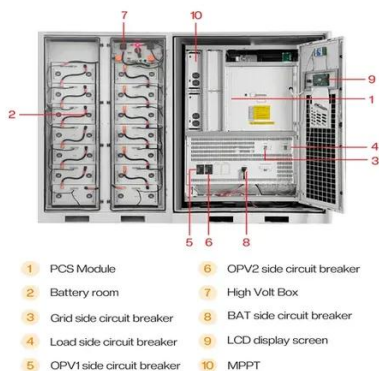


Selecting the Right Supplies for Powering 5G Base Stations

These solutions are specially designed to power high performance RF systems with the highest power conversion efficiency and density without adding noise or interference to the radio ...

Base Stations

Power Supply: The power source provides the electrical energy to base station elements. It often features auxiliary power supply mechanisms that guarantee operation in ...



Powering 5G Infrastructure with Power Modules

Discover power module solutions for 5G infrastructure delivering high power density, efficiency, and reliability for base stations ...



Contact Us

For inquiries, pricing, or partnerships:

<https://www.sccd-sk.eu>

Phone: +32 2 808 71 94

Email: info@sccd-sk.eu

Scan QR code for WhatsApp.

