



What is the capacity of each energy storage power station





Overview

Unit capacity refers to the maximum energy a single storage module can hold, measured in megawatt-hours (MWh). It's the VIP section of energy storage - where scalability meets practicality.

Unit capacity refers to the maximum energy a single storage module can hold, measured in megawatt-hours (MWh). It's the VIP section of energy storage - where scalability meets practicality.

Most of the world's grid energy storage by capacity is in the form of pumped-storage hydroelectricity, which is covered in List of pumped-storage hydroelectric power stations. This article list plants using all other forms of energy storage. Another energy storage method is the consumption of.

Electrical Energy Storage (EES) systems store electricity and convert it back to electrical energy when needed. 1 Batteries are one of the most common forms of electrical energy storage. The first battery, Volta's cell, was developed in 1800. 2 The U.S. pioneered large-scale energy storage with the.

The capacity of energy storage power stations varies widely based on technologies and applications, with some systems designed for short-duration energy storage and others for long-duration capabilities. 1. Common capacities range from megawatt-scale (MW) systems, suitable for ancillary services.

Now scale that up to power grids, and you'll understand why the capacity of energy storage power stations has become the hottest topic in energy circles. As renewable energy adoption skyrockets, these storage facilities are playing a crucial game of catch-up, trying to bottle sunshine and store.

Battery storage power stations store electrical energy in various types of batteries such as lithium-ion, lead-acid, and flow cell batteries. These facilities require efficient operation and management functions, including data collection capabilities, system control, and management capabilities.

The lower power station has four water turbines which can generate a total of 360 MW of electricity for several hours, an example of artificial energy storage and conversion. Energy storage is the capture of energy produced at one time for use



at a later time [1] to reduce imbalances between energy. What type of energy storage is used in the world?

Most of the world's grid energy storage by capacity is in the form of pumped-storage hydroelectricity, which is covered in List of pumped-storage hydroelectric power stations. This article list plants using all other forms of energy storage.

What are battery storage power stations?

Battery storage power stations are usually composed of batteries, power conversion systems (inverters), control systems and monitoring equipment. There are a variety of battery types used, including lithium-ion, lead-acid, flow cell batteries, and others, depending on factors such as energy density, cycle life, and cost.

What are the core functions of energy storage power stations?

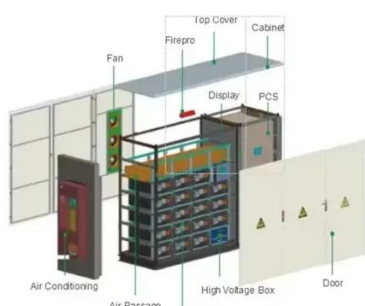
In addition to these core functions, functions such as anti-backflow protection, support for parallel/off-grid operation, and islanding protection further enhance the reliability and versatility of energy storage power stations.

What is a battery energy storage system?

A battery energy storage system (BESS), battery storage power station, battery energy grid storage (BEGS) or battery grid storage is a type of energy storage technology that uses a group of batteries in the grid to store electrical energy.



What is the capacity of each energy storage power station



Unit Capacity in Energy Storage Power Stations: The Ultimate ...

Unit capacity refers to the maximum energy a single storage module can hold, measured in megawatt-hours (MWh). It's the VIP section of energy storage - where scalability meets ...

What is the capacity of the energy storage power station?

Understanding the specific needs of a project, including energy capacity requirements, distance to grid connection points, and duration of energy storage needed, will ...



Battery storage power station - a comprehensive ...

The guide covers the construction, operation, management, and functionalities of these power stations, including their contribution to grid ...

U.S. Grid Energy Storage Factsheet

Electrical Energy Storage (EES) systems store electricity and convert it back to electrical energy when needed. 1 Batteries are one of the most common forms of electrical energy storage.



Capacity of Energy Storage Power Stations: The Backbone of ...

Now scale that up to power grids, and you'll understand why the capacity of energy storage power stations has become the hottest topic in energy circles. As renewable energy ...



Battery energy storage system

As of 2021, the power and capacity of the largest individual battery storage system is an order of magnitude less than that of the largest pumped ...



Energy storage

Storage capacity is the amount of energy extracted from an energy storage device or system; usually measured in joules or kilowatt-hours and their multiples, it may be given in number of ...





List of energy storage power plants

The energy is later converted back to its electrical form and returned to the grid as needed. Most of the world's grid energy storage by capacity is in the form of pumped-storage ...

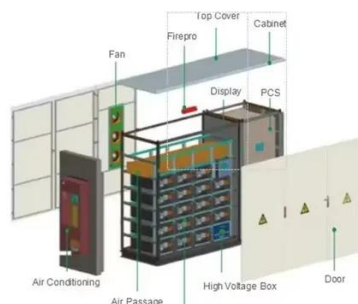


Energy storage

Storage capacity is the amount of energy extracted from an energy storage device or system; usually measured in joules or kilowatt-hours and their ...

[Battery storage power station - a comprehensive guide](#)

The guide covers the construction, operation, management, and functionalities of these power stations, including their contribution to grid stability, peak shaving, load shifting, and backup ...



[What is the capacity of energy storage power station?](#)

The capacity of energy storage power stations varies widely based on technologies and applications, with some systems designed for short-duration energy storage and others for ...



Battery energy storage system

As of 2021, the power and capacity of the largest individual battery storage system is an order of magnitude less than that of the largest pumped-storage power plants, the most common form ...

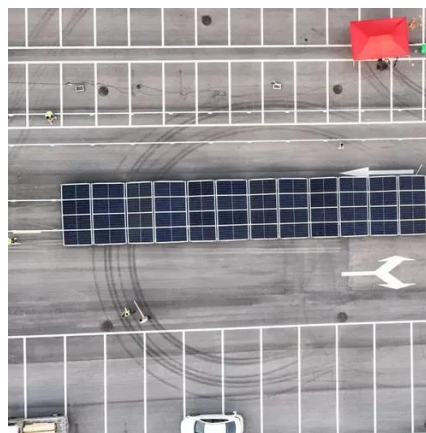


Storage Data Maps

Discover installed capacity, number of projects, and annual trends data by storage type and sector (residential, commercial, and grid-scale) for completed projects including those that did ...

What is the capacity of energy storage power station?

The capacity of energy storage power stations varies widely based on technologies and applications, with some systems designed for ...



What is the capacity of the energy storage power ...

Understanding the specific needs of a project, including energy capacity requirements, distance to grid connection points, and duration of ...



Contact Us

For inquiries, pricing, or partnerships:

<https://www.sccd-sk.eu>

Phone: +32 2 808 71 94

Email: info@sccd-sk.eu

Scan QR code for WhatsApp.

