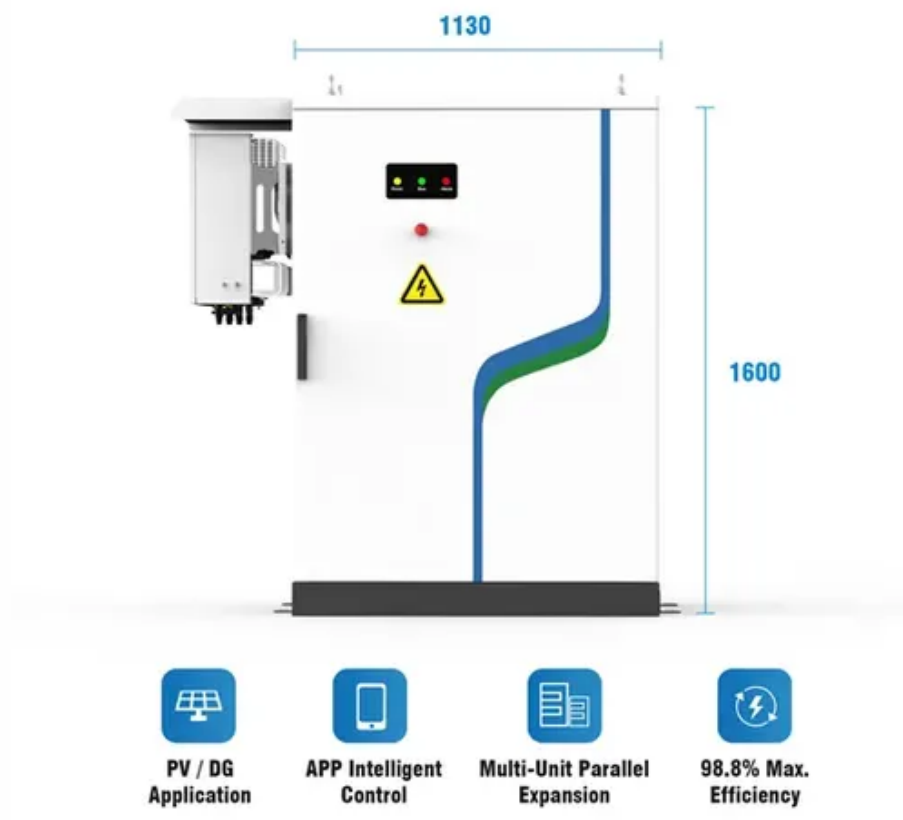




# What is the current of the tool battery





## Overview

---

How many amps can a cordless tool battery deliver?

Cordless Tool Batteries: Battery capacity is measured in Amp-Hours (Ah). This tells you how long the battery can deliver a certain current. A 5.0Ah battery can theoretically deliver 5 amps for 1 hour, or 1 amp for 5 hours (though efficiency and discharge rates complicate this slightly).

How do power tools work?

Amps govern the flow of current, voltage provides the necessary pressure, and power (in watts) is the final output that gets the job done. By understanding these fundamental principles, you'll be able to make smarter, more informed decisions when it comes to choosing the right power tools for your needs.

Why do cordless power tools use Li-ion batteries?

When cordless power tool brands switched to Li-ion battery technologies, they spec'ed and advertised batteries according to two fundamental characteristics - voltage and charge capacity, with units of volts and amp-hours, respectively. Voltage is a widely-understood concept, and amp-hours less so.

What does Ah mean on a power tool?

Most tool users should understand voltage (V) as being related to power, current (A) as a measure of electrical flow, and amp-hour (Ah) as a measure of charge capacity and how long a battery will power a tool or device. i) Cordless Power Tool FAQ: What Does "Ah" Mean?



## What is the current of the tool battery



### [Comparing Power Tool Battery Specs - Watt ...](#)

Most tool users should understand voltage (V) as being related to power, current (A) as a measure of electrical flow, and amp ...

### [How Many Amps Does a Typical Power Tool Use?](#)

The amperage of a typical power tool varies widely based on the tool's size and function, ranging from under 1 amp for small drills to over 15 amps for heavy-duty saws or ...



### [What Do Ah and Capacity Mean on Your Power ...](#)

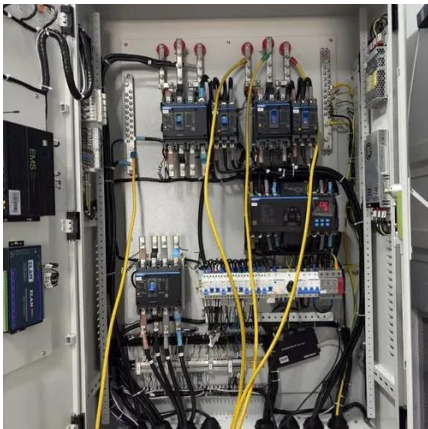
Let's take a 4.0 Ah battery. This can source a current of 4 ...

### [What Do Ah and Capacity Mean on Your Power Tool Battery?](#)

Let's take a 4.0 Ah battery. This can source a current of 4 amps for 1 hour before it goes flat. How did we work that out? We know that: Amp-



hour capacity = current x time for ...



## Demystifying Battery Voltage, Capacity, and Power Tool Synergy

For power tools drawing 2.5 amps of current, the 5.0 amp battery will last up to 2 hours before needing to be recharged. Actual run time may vary depending on factors such as the ...

## [Decoding Battery Amp-Hours: Choosing the Right ...](#)

Simply put, it indicates how much current a battery can deliver over a specific period. A higher Ah rating means the battery can supply ...



## The Life of a Power Tool Battery: Understanding Capacity, ...

The voltage of a power tool battery, typically ranging from 12V to 40V, determines the tool's performance and compatibility with various devices. It's essential to choose a battery ...



## Comparing Power Tool Battery Specs - Watt-Hours vs Amp-Hours

Most tool users should understand voltage (V) as being related to power, current (A) as a measure of electrical flow, and amp-hour (Ah) as a measure of charge capacity and ...

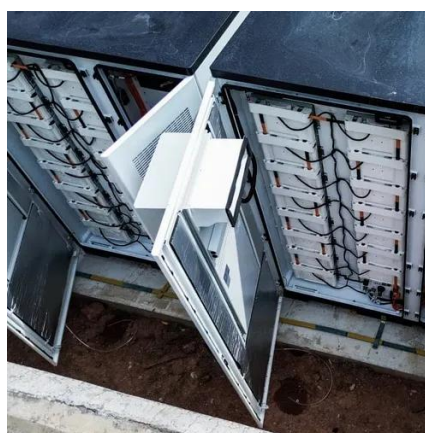


## Amp Vs Volt Power Tools Explained for Smarter Buying Decisions

Cordless Tool Batteries: Battery capacity is measured in Amp-Hours (Ah). This tells you how long the battery can deliver a certain current. A 5.0Ah battery can theoretically deliver ...

## [Power Tool Batteries Ultimate Guide: Amp-Hours, Voltage, ...](#)

It is expressed as the amount of current a battery can provide over a set period, usually one hour. For example, a 2Ah battery can supply 2 amps for one hour or 1 amp for two ...



## Decoding Battery Amp-Hours: Choosing the Right Power for Your Tools

Simply put, it indicates how much current a battery can deliver over a specific period. A higher Ah rating means the battery can supply power for a longer duration. Think of it ...



## Demystifying Amps, Voltage and Power in Power Tools

Amps, or amperes, are a measure of the flow of electric current. Imagine it like a river - the amps represent the volume of water (or in this case, electrons) flowing through at a ...



## Amp Vs Volt Power Tools Explained for Smarter ...

Cordless Tool Batteries: Battery capacity is measured in Amp-Hours (Ah). This tells you how long the battery can deliver a certain ...

## Demystifying Amps, Voltage and Power in Power Tools

Amps, or amperes, are a measure of the flow of electric current. Imagine it like a river - the amps represent ...



## Demystifying Battery Voltage, Capacity, and Power ...

For power tools drawing 2.5 amps of current, the 5.0 amp battery will last up to 2 hours before needing to be recharged. Actual run time maybe vary ...



## All About Battery Voltages

At the core of a power tool battery are individual cells resembling AA or C batteries. These cells are arranged in specific ways to achieve the voltage and capacity you ...





## Contact Us

---

For inquiries, pricing, or partnerships:

<https://www.sccd-sk.eu>

Phone: +32 2 808 71 94

Email: [info@sccd-sk.eu](mailto:info@sccd-sk.eu)

Scan QR code for WhatsApp.

