



What is the inverter for four batteries





Overview

Yes, a 24V inverter can work with four battery banks. However, proper configuration and compatibility are crucial. Using multiple battery banks allows for increased capacity and longer run time for the inverter. Each battery bank must be wired in series to achieve the 24V output.

Yes, a 24V inverter can work with four battery banks. However, proper configuration and compatibility are crucial. Using multiple battery banks allows for increased capacity and longer run time for the inverter. Each battery bank must be wired in series to achieve the 24V output.

Yes, you can use a 24V inverter with four batteries. Make sure the batteries in each bank are at the same voltage. Connect the batteries in parallel for a 24V configuration. Do not connect batteries charged in series, as this can damage your inverter. Always follow safety precautions during setup.

I'm planning to connect 4x eg4 6000 inverters to 14 EG4 LifePower4 V2 batteries. Please, the pros and cons of one big battery bank vs 2x 3 batteries + 2x 4 batteries into each inverter. I'm leaning towards one big battery bank but now second guessing myself. Also what kind of bus bar / fuse.

First off, the short answer is yes, you can connect multiple batteries to an inverter. But there are a bunch of things you gotta consider before you go ahead and do it. Why Connect Multiple Batteries?

There are a few good reasons why someone might want to connect multiple batteries to an inverter.

This article focuses on creating a robust 24v solar system using a solar inverter 24v , four 12-volt lithium batteries , and four solar panels. We'll also explore the solar inverter wiring diagram and provide step-by-step instructions on how to connect solar power system components effectively. A.

Because there is a limit to how many batteries you can hook up. And it depends on how you connect them all together. So let's go through the amount of batteries you can wire to an inverter, plus the best way to achieve your objective. How Many Batteries Can Be Connected to an Inverter?



There is no.

In this article, I will discuss both methods and guide you through connecting 4 12V batteries to create a 24V system. Series First Method: Connect two batteries in series, and then connect these sets in parallel. Parallel First Method (Preferred): Connect two sets of batteries in parallel and then. What type of battery does a car inverter use?

Voltage In - Most commonly, 12V batteries are used to power inverters. This is the type of battery in your car. Heavy-duty inverter/chargers are also available that use 24V, 36V or 48V batteries for applications requiring higher wattages. Ensure the batteries you choose match the inverter's input voltage.

How many batteries can I connect to my inverter?

There is no set limit to how many batteries you can connect to your inverter. But you must understand how you connect your batteries together affects what you can and can't do! For example, connecting your batteries in series will be different to connecting in parallel.

Can a 12V inverter be connected to a 24v battery?

Let's say you have a 12V inverter and try to connect two 12V batteries in series. You would end up inputting 24V to the inverter and cause an overload. This could cause damage to your equipment, at the very least your inverter will shut down to protect itself.

What is a battery inverter used for?

RV and Marine Power: Battery inverters are commonly used in RVs and boats to provide AC power from batteries, allowing you to enjoy the comforts of home while on the go. They enable the use of appliances like refrigerators, microwaves, and entertainment systems in recreational vehicles and marine vessels.



What is the inverter for four batteries



[How to connect 4 batteries to solar energy , NenPower](#)

Next, place batteries in conjunction with the charge controller and inverter, ensuring appropriate distances and wire length to minimize energy loss. Following that, decide ...

[Connecting Multiple Batteries to an Inverter: Easy Guide](#)

There is no set limit to how many batteries you can connect to your inverter. But you must understand how you connect your batteries together affects what you can and can't do! For ...



[Can I connect multiple batteries to an inverter?](#)

For businesses or homes that need a reliable backup power source, connecting multiple batteries to an inverter can ensure that you ...

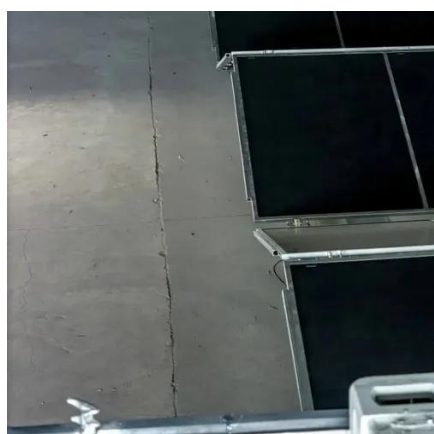


Can I Use a 24V Inverter with 4 Battery Banks? Wiring Strategies ...

Yes, a 24V inverter can work with four battery banks. However, proper configuration and compatibility are crucial. Using multiple battery



banks allows for increased capacity and ...



[Learn How to Connect 4 12V Batteries to Make 24V](#)

In this article, I will discuss both methods and guide you through connecting 4 12V batteries to create a 24V system.

[How to Set Up a Reliable 24V Solar Inverter ...](#)

This article focuses on creating a robust 24v solar system using a solar inverter 24v, four 12-volt lithium batteries, and four solar panels. We'll ...



[Can I connect multiple batteries to an inverter?](#)

For businesses or homes that need a reliable backup power source, connecting multiple batteries to an inverter can ensure that you have enough power during a power outage.



[Connecting Multiple Batteries to an Inverter: Easy ...](#)

There is no set limit to how many batteries you can connect to your inverter. But you must understand how you connect your batteries together affects ...



How to Safely Connect a Battery to an Inverter: A Step-by-Step ...

Learn how to safely connect your batteries to your inverter with our guide. Avoid common wiring mistakes to optimize performance and extend system life.

How to Set Up a Reliable 24V Solar Inverter System: A Step-by ...

This article focuses on creating a robust 24v solar system using a solar inverter 24v, four 12-volt lithium batteries, and four solar panels. We'll also explore the solar inverter wiring diagram ...



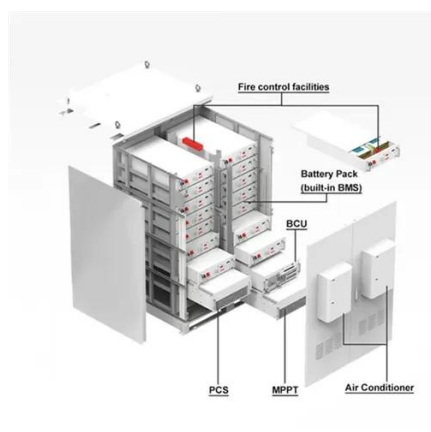
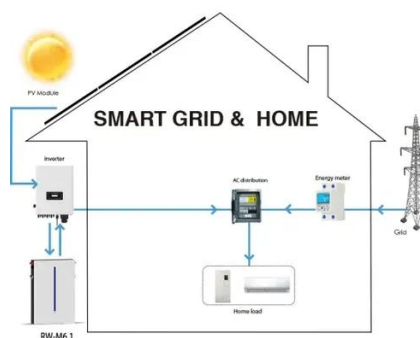
Power Inverter Buying Guide , Eaton

What is the difference between an inverter and inverter/charger? An inverter simply converts DC (battery) power into AC power and then passes it along to connected equipment. An ...



[Learn How to Connect 4 12V Batteries to Make ...](#)

In this article, I will discuss both methods and guide you through connecting 4 12V batteries to create a 24V system.



[What is a Battery Inverter? A Comprehensive Overview](#)

This comprehensive guide will delve into the battery inverters, exploring their inner workings, diverse applications, and key considerations for choosing the right one for your ...

4x inverters to 1 big battery bank or to subsets of batteries

I'm planning to connect 4x eg4 6000 inverters to 14 EG4 LifePower4 V2 batteries. Please, the pros and cons of one big battery bank vs 2x 3 batteries + 2x 4 batteries into each ...





Contact Us

For inquiries, pricing, or partnerships:

<https://www.sccd-sk.eu>

Phone: +32 2 808 71 94

Email: info@sccd-sk.eu

Scan QR code for WhatsApp.

