



What is the overvoltage load current limit of the solar panel





Overview

When over-paneling, the solar charge controller will limit the current it delivers to its maximum rated capacity. This means that even if the solar panels can produce more power, the controller will only accept what it can handle. This is why overpaneling .

When over-paneling, the solar charge controller will limit the current it delivers to its maximum rated capacity. This means that even if the solar panels can produce more power, the controller will only accept what it can handle. This is why overpaneling .

Sizing requirements: Devices must handle 125% of the maximum current per NEC standards. Combiner boxes: Consolidate inputs and house safety components like fuses, surge protectors, and disconnect switches. Quick Comparison: Proper protection ensures your solar system operates safely and.

Open Circuit Voltage (Voc): This is the maximum voltage your panel can produce, usually measured on a bright, cold morning. Maximum Power Voltage (Vmp): This is the voltage at which your panel operates most efficiently. If voltage is pressure, current (measured in amps) is the flow rate. Voltage is.

To troubleshoot, check for shading on the panels, faulty wiring connections, or incorrect settings on the charge controller that could be causing the high voltage output. The overvoltage values are also dependent on the short-circuit power of the system and the transformer load degree. Fig. 7.

An electronic device designed to regulate the flow of power from the solar panels to the battery bank is called a charge controller. It is also known as a solar charge regulator. The primary purpose of this device is to ensure that your batteries charge at a proper voltage and current. This is how.

What is the maximum voltage of a solar panel?

Most solar panels have a maximum voltage between 30V and 60V, depending on size, design, and conditions. Solar panels usually max out between 30V-60V per panel, depending on size and design. Cold weather increases voltage, hot weather lowers it.



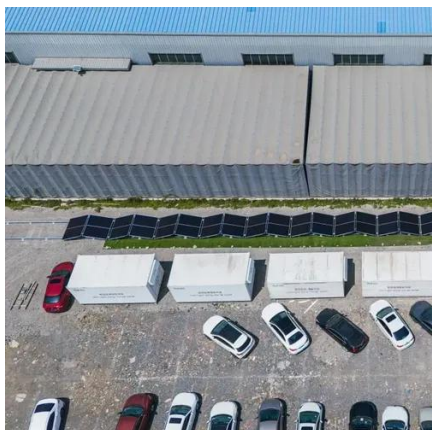
What is an over-voltage issue?

Regulations require solar systems to shut off if the average grid voltage over any 10 minute period exceed 255V or right away at 260V. What are the consequences of having over-voltage issues?

Depending on how long the system is turned off due to the over-voltage.



What is the overvoltage load current limit of the solar panel

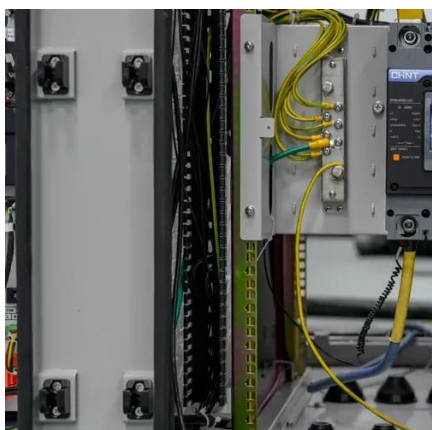
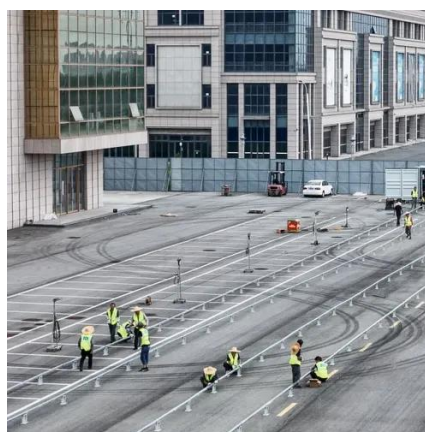


Over-voltage issues

What is an over-voltage issue? Regulations require solar systems to shut off if the average grid voltage over any 10 minute period exceed 255V or right away at 260V.

Reasons for overvoltage and load limit of photovoltaic panels

Scientists at the University of South Australia have identified a series of strategies that can be implemented to prevent solar power losses when overvoltage-induced inverter disconnections



[Overcurrent Protection Basics for Solar Systems](#)

Learn essential overcurrent protection methods for solar systems to enhance safety, reduce fire risks, and ensure compliance with industry standards.

[What Is the Maximum Voltage of a Solar Panel?](#)

For most residential panels, you're looking at anywhere between 30 to 50 volts per panel. Bigger commercial panels flex higher, ...



[Solar Panel Voltage: 2026 Ultimate Guide](#)

We have explained what solar panel voltage is and how you can calculate it. Learning about different solar panel voltages and the factors affecting them will help in better ...



[Overcurrent Protection Basics for Solar Systems](#)

Learn essential overcurrent protection methods for solar systems to enhance safety, reduce fire risks, and ensure compliance with ...



[Overpaneling Solar Charge Controller: A](#)

When over-paneling, the solar charge controller will limit the current it delivers to its maximum rated capacity. This means that even if ...





What Is Overcurrent Protection? Everything You Need to Know

Though a solar panel charge controller is a small component of your solar system, it protects the huge amount you invest in buying batteries, ensuring safe and proper charging.

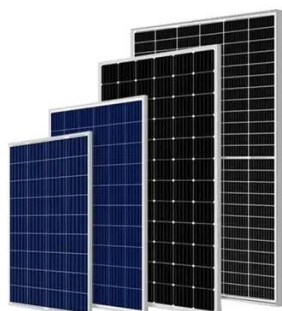


Understanding Solar Panel Voltage and Current ...

However, many experts agree that you can safely overpanel with excess current as long as you always stay under the voltage limit of your power ...

What is the maximum voltage that a solar panel can carry?

Residential solar panels typically have a maximum voltage of around 40 to 45 volts, 2. Commercial solar panels often exceed these specifications, reaching up to 70 volts.



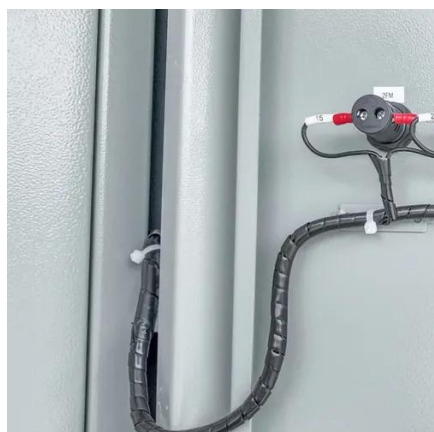
Understanding Solar Panel Voltage and Current Output

However, many experts agree that you can safely overpanel with excess current as long as you always stay under the voltage limit of your power station or charge controller - even in cold ...



What is the maximum voltage that a solar panel ...

Residential solar panels typically have a maximum voltage of around 40 to 45 volts, 2. Commercial solar panels often exceed these ...

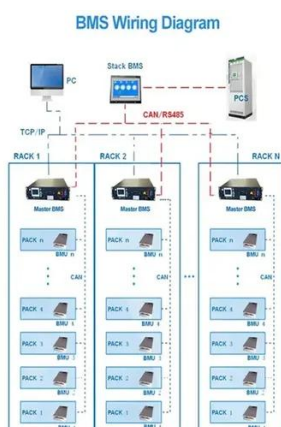


Overpanel Oversize PV Array CONFUSION

There are two limits, when determining the maximum array size that can be connected to an MPPT: Both values are specified in the datasheets of all our MPPT Solar ...

Solar Panel Voltage: 2026 Ultimate Guide

We have explained what solar panel voltage is and how you can calculate it. Learning about different solar panel voltages and the ...



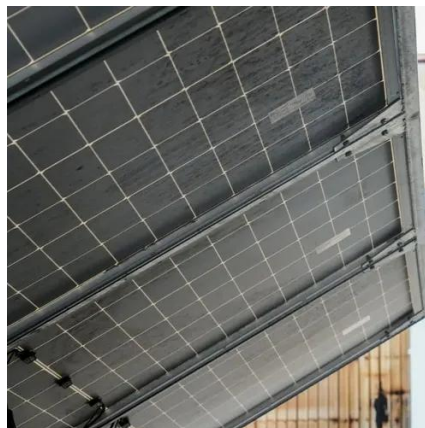
Overpaneling Solar Charge Controller: A Comprehensive Guide

When over-paneling, the solar charge controller will limit the current it delivers to its maximum rated capacity. This means that even if the solar panels can produce more power, ...



[What Is Overcurrent Protection? Everything You ...](#)

Though a solar panel charge controller is a small component of your solar system, it protects the huge amount you invest in buying batteries, ...



[What Is the Maximum Voltage of a Solar Panel? Here's Why](#)

For most residential panels, you're looking at anywhere between 30 to 50 volts per panel. Bigger commercial panels flex higher, sometimes over 60 volts. Why does this matter? ...



Contact Us

For inquiries, pricing, or partnerships:

<https://www.sccd-sk.eu>

Phone: +32 2 808 71 94

Email: info@sccd-sk.eu

Scan QR code for WhatsApp.

