



# What is the size of the 690 solar panel





## Overview

---

Waaree 690Wp-BiN-03 model of series Elite-N-Type has an efficiency of 22.2% on a module area of 3.11 m<sup>2</sup>. With higher efficiency and compact footprint, it suits rooftops where space is constrained. Module area: 3.11 m<sup>2</sup> (approx; 1303×2384 mm).

Waaree 690Wp-BiN-03 model of series Elite-N-Type has an efficiency of 22.2% on a module area of 3.11 m<sup>2</sup>. With higher efficiency and compact footprint, it suits rooftops where space is constrained. Module area: 3.11 m<sup>2</sup> (approx; 1303×2384 mm).

Huasun's HJT solar cell, based on N-type Silicon Wafer, utilizes [. ] Presenting the GS6 and GS7 Series 660-700W solar modules by Group [. ] The PW-66M670-700HG12 by Powitt Solar is a high-quality solar module [. ] Too many choices of suppliers and products?

Let our team find suppliers for you.

Product Documentation Certifications & Qualifications Questions about this product?

Standard Residential Panels Optimize Space and Handling: The industry-standard 60-cell panel dimensions (65" × 39" × 1.5") aren't arbitrary – they represent the optimal balance between power output, installation ease, and roof space utilization. At 40-46 pounds, they can be safely handled by.

690W High Output: Ideal for large PV systems with limited space or high energy demand. Superior Module Efficiency: Up to 22.2% front-side efficiency with rear-side bifacial gain up to 20%. Extra Power from Both Sides: Bifaciality factor of 80% ± 5% for enhanced ground-reflected yield. Durable &.

Needed 720 panels for our logistics hub. No regrets—low maintenance, high efficiency These panels power our irrigation system efficiently. Great investment these 610W panels give our clients the fastest payback period. bifacial gain is real. We expanded our business with these panels. Energy.



The star of LCOE (Levelized Cost Of Energy). Higher string power feature effectively reduces BOS (Balance of System) and LCOE. More energy harvest with cutting-edge N-type-i-TOPCon technology, Designed for compatibility with existing mainstream system components. Up to 22.5% module efficiency with.



## What is the size of the 690 solar panel

---

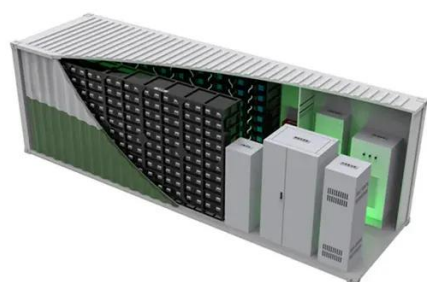


### [Top selling 680W 685W 690W 695W 700W Mono PERC Solar ...](#)

MateSolar 210mm panels achieve efficiency ratings between 21.90% and 22.54%, depending on the model and configuration. This high efficiency is achieved through advanced PERC ...

### [Standard Solar Panel Sizes And Wattages \(100W ...](#)

96-cell solar panel size. The dimensions of 96-cell solar panels are as follows: 41.5 inches long, and 63 inches wide. That's a 63x41.5 solar ...



### [Solar Panel Bifacial Half-cut Monocrystalline 690 Wp](#)

SOLAR PANEL 690 WATTS , TRINA SOLAR , Bifacial Half-cut , Monocrystalline , 132 Cells PV Module , Power tolerance 0/+5W , L 2384 mm, W 1303 mm, D 33 mm , 38.30 kg , Material ...

### **Canadian Solar 690W Solar Panel 132 Cells Bifacial CS7N-TB ...**

Good panel, works well and easy to set up. The panels are very good, though a bit larger than I expected. I installed them in my yard, and they



work from dawn till dusk. The ...



### 690 Watt Solar panels for sale , Prices, dimensions, weight, ...

690 Watt Solar panels' range of prices, dimensions, sizes, voltage output, specifications datasheets Ranges of information Voltage: 39V ~ 41.8V Amp: 16.51A ~ 17.7A

### [Trina Solar Panels 680Watt 690Watt 700 Watt Bifacial Mono](#)

Brand Name: Trina Solar Model Number: TSM-NEG21C.20 675-700M Panel Efficiency: 22.5% Panel Dimensions: 2384\*1303x33mm Cell Type: N Type Mono-crystalline Cell size: ...



### [Canadian Solar 690W N-type Bifacial TOPCon ...](#)

Q: What is the power output of the Canadian Solar CS7N-690TB-AG panel? The CS7N-690TB-AG panel delivers 690 watts of power, offering high ...





## Top selling 680W 685W 690W 695W 700W Mono PERC Solar Panel ...

MateSolar 210mm panels achieve efficiency ratings between 21.90% and 22.54%, depending on the model and configuration. This high efficiency is achieved through advanced PERC ...

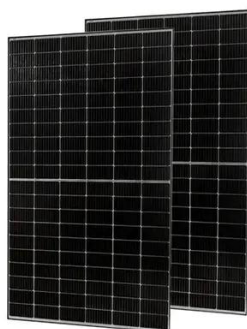


## [Standard Solar Panel Sizes And Wattages \(100W-500W ...](#)

96-cell solar panel size. The dimensions of 96-cell solar panels are as follows: 41.5 inches long, and 63 inches wide. That's a 63x41.5 solar panel. This form is a bit shorter but wider. This is ...

## Canadian Solar 690W N-type Bifacial TOPCon CS7N-690TB-AG solar panel

Q: What is the power output of the Canadian Solar CS7N-690TB-AG panel? The CS7N-690TB-AG panel delivers 690 watts of power, offering high efficiency and energy yield suitable for ...



## [Solar Panel Size & Dimensions Guide 2025 . Complete Specs](#)

In this comprehensive guide, you'll learn everything you need to know about solar panel sizing, from standard dimensions to weight considerations, helping you determine the ...



## Canadian Solar 690W Solar Panel 132 Cells Bifacial CS7N-TB-AG-690

Good panel, works well and easy to set up. The panels are very good, though a bit larger than I expected. I installed them in my yard, and they work from dawn till dusk. The ...



## [690 Photovoltaic panel specifications and dimensions](#)

What Are the Standard Solar Panel Sizes? When it comes to standard solar panel sizes, like 300w or 500w, it is essential to determine the size of a solar panel system based on these ...

## [Trina Solar Panels 680Watt 690Watt 700 Watt ...](#)

Brand Name: Trina Solar Model Number: TSM-NEG21C.20 675-700M Panel Efficiency: 22.5% Panel Dimensions: 2384\*1303x33mm Cell Type: N ...



## [Waaree 690Wp Elite-N-Type bifacial solar panel](#)

Solar panels -- especially newer high wattage -- use a larger wafer size called M12 to optimize cost. These high wattage panels- are not compatible with old and new solar inverters due to - ...





## Contact Us

---

For inquiries, pricing, or partnerships:

<https://www.sccd-sk.eu>

Phone: +32 2 808 71 94

Email: [info@sccd-sk.eu](mailto:info@sccd-sk.eu)

Scan QR code for WhatsApp.

