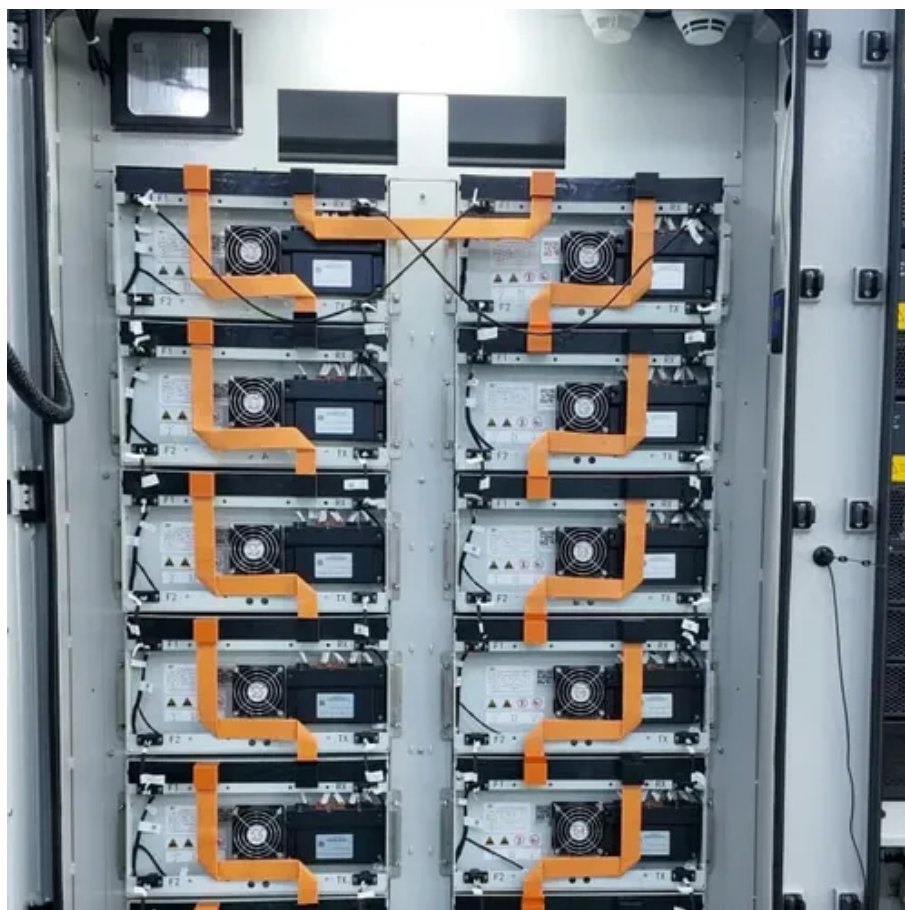




What is the size of the solar panel of 60





What is the size of the solar panel of 60



[What is the Standard Size of a Solar Panel Explained](#)

Most solar panels on the market today have standard dimensions that fall within a specific range. The most common sizes are: 60-cell panels: Typically measure about 65 ...

[What Size Are Solar Panels and How Much Power Do They ...](#)

How Size Relates to Power Output The power output of a solar panel is directly linked to its physical size and the efficiency of the cells inside, with the rating measured in ...



[What Size Are Solar Panels? A Comprehensive ...](#)

When asking what size are solar panels, it's typical for residential energy modules to measure around 65 inches by 39 inches, ...



[Solar Panel Size & Dimensions Guide 2025 . Complete Specs](#)

Standard Residential Panels Optimize Space and Handling: The industry-standard 60-cell panel dimensions (65" × 39" × 1.5") aren't arbitrary -



they represent the optimal ...



What Are the Common Solar Panel Sizes?

The size of solar panels with the same cell count varies slightly, depending on the brand and model. Still, most 60-cell solar panels have a size of 39" X 66" and most 72-cell ...



Standard Solar Panel Sizes And Wattages (100W ...

The goal here is to get to the average solar panel size by wattage. You can find typical dimensions of 100W, 150W, 170W, 200W, 200W, 220W, ...



Solar Panel Size Guide , Best Panel Size for Your Roof

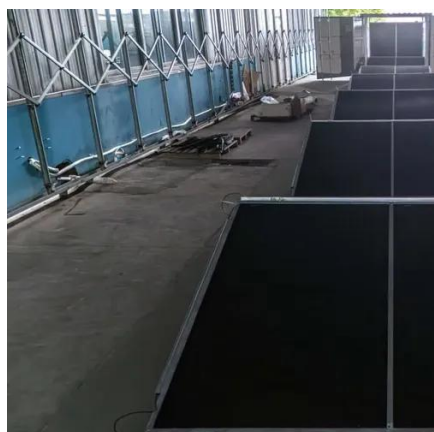
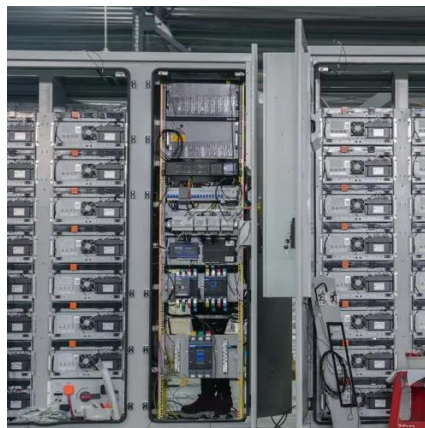
Solar cells are assembled in grids, and the most common configurations are 60-cell panels for residential use and 72-cell panels for commercial or utility use. A 60-cell panel ...





Solar Panel Size Guide

Next, a standard home generally needs solar panels with 60 or 72 solar PV cells. Meanwhile, a business usually needs solar panels with 72 or 96 solar PV cells. Finally, here ...



[Standard Solar Panel Sizes And Wattages \(100W-500W ...](#)

The goal here is to get to the average solar panel size by wattage. You can find typical dimensions of 100W, 150W, 170W, 200W, 200W, 220W, 300W, 350W, 400W, and 500W solar ...

[What Size Are Solar Panels? A Comprehensive Guide to ...](#)

When asking what size are solar panels, it's typical for residential energy modules to measure around 65 inches by 39 inches, with efficiency ratings ranging from 15% to 22%, ...



[standard solar photovoltaic panel sizes explained](#)

The standard residential solar photovoltaic panel size you'll see most often is based on a 60-cell configuration, typically measuring about 67 inches long by 40 inches wide.





[Solar Panel Size Guide , Best Panel Size for Your ...](#)

Solar cells are assembled in grids, and the most common configurations are 60-cell panels for residential use and 72-cell panels for ...



[What size is a 60w solar panel? . NenPower](#)

Average dimensions are 44? x 21?, 2. Weight varies between 15 to 25 pounds, 3. Efficiency lies around 15-20%, 4. Ideal for off-grid ...

Solar Panel Size Guide

Next, a standard home generally needs solar panels with 60 or 72 solar PV cells. Meanwhile, a business usually needs solar panels ...



[What size is a 60w solar panel? . NenPower](#)

Average dimensions are 44? x 21?, 2. Weight varies between 15 to 25 pounds, 3. Efficiency lies around 15-20%, 4. Ideal for off-grid systems. These panels can be utilized in ...





Contact Us

For inquiries, pricing, or partnerships:

<https://www.sccd-sk.eu>

Phone: +32 2 808 71 94

Email: info@sccd-sk.eu

Scan QR code for WhatsApp.

