



Where are the power signal base stations in Tokyo





Overview

The orange line in the figure below shows the power system managed by the TEPCO Power Grid , and you can see that the power system is laid out in multiple layers around Tokyo. The power system (green) managed by the Tohoku Electric Power Network looks like this.

The orange line in the figure below shows the power system managed by the TEPCO Power Grid , and you can see that the power system is laid out in multiple layers around Tokyo. The power system (green) managed by the Tohoku Electric Power Network looks like this.

The US maintained signals intelligence (SIGINT) activities at about 100 sites in Japan during the Cold War, probably than in any other country. In Japan today, about 1,000 US personnel are engaged in SIGINT, Information Operations, Internet surveillance and Network Warfare activities, mainly at.

This is a study of Japan's ground-based signals intelligence (SIGINT) stations, the 17 (soon to be 19) major facilities that intercept, monitor, collect, process and analyse foreign electronic signals. Official statements convey nothing of the scale or detail of the Japanese SIGINT effort, which is.

The US now conducts signals intelligence (SIGINT) and cyber-warfare activities at six places in Japan. Yokosuka Naval Base in Tokyo Bay, which was first opened as a US Navy SIGINT station in April 1946, now hosts the Navy Information Operations Command (NIOC), which provides SIGINT, Information.

Japan's Signals Intelligence (SIGINT) Ground Stations: A Visual Guide
Recommended Citation Desmond Ball and Richard Tanter, "Japan's Signals Intelligence (SIGINT) Ground Stations: A Visual Guide", NAPSNet Special Reports, August 06, 2015, <https://nautilus.org/napsnet/napsnet-specia->.

This is a study of Japan's ground-based signals intelligence (SIGINT) stations, the 17 (soon to be 19) major facilities that intercept, monitor, collect, process and analyse foreign electronic signals. Official statements convey nothing of the scale or detail of the Japanese SIGINT effort, which is.

This is a study of Japan's ground-based signals intelligence (SIGINT) stations, the



17 (soon to be 19) major facilities that intercept, monitor, collect, process and analyse foreign electronic signals. Official statements convey nothing of the scale or detail of the Japanese SIGINT effort, which is.



Where are the power signal base stations in Tokyo



[Japan's Signals Intelligence \(SIGINT\) Ground Stations: A](#)

This is a study of Japan's ground-based signals intelligence (SIGINT) stations, the 17 (soon to be 19) major facilities that intercept, monitor, collect, process and analyse foreign ...

[Japan's Signals Intelligence \(SIGINT\) Ground Stations: A](#)

These Japanese ground signals interception and location facilities are integrated with its air and missile defence radar facilities.



[Japan's Signals Intelligence \(SIGINT\) Ground ...](#)

Introduction This is a study of Japan's ground-based signals intelligence (SIGINT) stations, the 17 (soon to be 19) major facilities that ...



[US signals intelligence \(SIGINT\) activities in Japan 1945](#)

In Japan today, about 1,000 US personnel are engaged in SIGINT, Information Operations, Internet surveillance and Network Warfare



activities, mainly at Yokosuka, Misawa, Yokota Air
...



Substations , TEPCO

Tokyo, known as a world-leading commercial city and famous for its densely packed housing, also requires substations to provide electricity stably.

...



US Signals Intelligence (SIGINT) Activities in Japan 1945 - ...

Yokosuka Naval Base in Tokyo Bay, which was first opened as a US Navy SIGINT station in April 1946, now hosts the Navy Information Operations Command (NIOC), which provides SIGINT, ...



Japan's Signals Intelligence (SIGINT) Ground Stations: A

This is a study of Japan's ground-based signals intelligence (SIGINT) stations, the 17 (soon to be 19) major facilities that intercept, monitor, collect, process and analyse foreign electronic signals.





Substations , TEPCO

Tokyo, known as a world-leading commercial city and famous for its densely packed housing, also requires substations to provide electricity stably. Due to the limited amount of land in urban ...



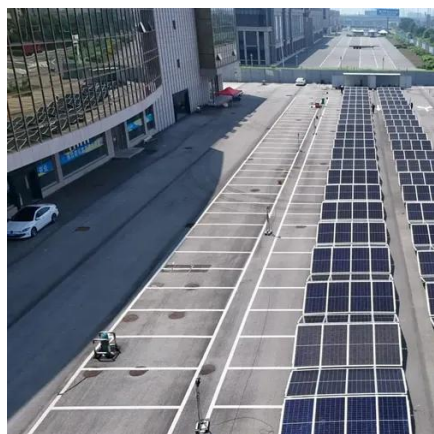
List of power stations in Japan

This page is a list of power stations in Japan that are publicly or privately owned.



[Japan's Signals Intelligence \(SIGINT\) Ground ...](#)

This is a study of Japan's ground-based signals intelligence (SIGINT) stations, the 17 (soon to be 19) major facilities that intercept, ...



Power networks/Japan

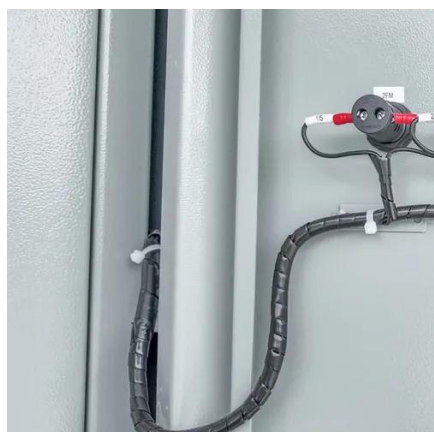
This page has been created through the power networks country page template. Check the template page for more information on how to complete it.



The 'power system map' that summarizes the power grids spread ...

...

The orange line in the figure below shows the power system managed by the TEPCO Power Grid, and you can see that the power system is laid out in multiple layers ...



Japan's Signals Intelligence (SIGINT) Ground Stations: a Visual ...

Introduction This is a study of Japan's ground-based signals intelligence (SIGINT) stations, the 17 (soon to be 19) major facilities that intercept, monitor, collect, process and ...



Contact Us

For inquiries, pricing, or partnerships:

<https://www.sccd-sk.eu>

Phone: +32 2 808 71 94

Email: info@sccd-sk.eu

Scan QR code for WhatsApp.

