



Which inverter is better 12v or 16v





Overview

In this guide, we'll break down the differences between 12V, 24V, and 48V systems, covering efficiency, cost, compatibility, and ideal use cases—so you can make an informed choice that fits your power goals. Inverters convert DC power from your batteries into AC power for.

In this guide, we'll break down the differences between 12V, 24V, and 48V systems, covering efficiency, cost, compatibility, and ideal use cases—so you can make an informed choice that fits your power goals. Inverters convert DC power from your batteries into AC power for.

Whether you're powering an RV, building a solar setup, or running an off-grid home, choosing the right inverter system voltage is crucial. Many beginners ask: Should I use a 12V, 24V, or 48V inverter?

The answer depends on your power needs, battery bank, and system design. In this guide, we'll.

Pure Sine Wave Inverters are handy devices that can really take overlanding trips, life on the road, or vanlife to the next level. When connected to a 12v or 24v deep cycle auxiliary battery - the type of secondary battery generally used in your car or van - an inverter will convert this power to a.

A power inverter is a device that converts low-voltage DC (direct current) power from a battery to standard household AC (alternating current) power. An Inverter allows you to operate electronics, household appliances, tools and other electrical equipment using the power produced by a car, truck or.

Compare types, calculate your power needs, and find the perfect inverter for reliable backup power. Power outages can disrupt your daily life, affecting everything from basic comfort to critical work-from-home setups. Finding the best inverter for home use becomes essential for maintaining.

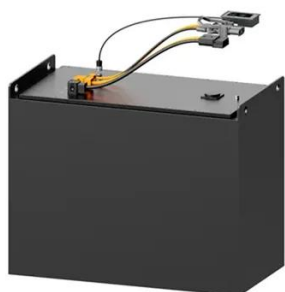
Now run your equipment 20% longer and on a separate clean power system, and receive better clarity and signal returns with 16V systems. Switch with no effects on warranty issues. as all units listed operate at above 16 volts. When setting up a system add the the total number of amps needed and.



They convert direct current (DC) from batteries or solar panels into alternating current (AC), which powers household appliances and industrial equipment. Choosing the right inverter depends on several factors, including power capacity, efficiency, and compatibility with your energy system. 1.



Which inverter is better 12v or 16v



[12V VERSUS 16V EFFICIENCY AND AMP DRAW SPECS](#)

Switch with no effects on warranty issues. as all units listed operate at above 16 volts. When setting up a system add the the total number of amps needed and divide by the AH of the ...

Power Inverter Buying Guide , Eaton

Learn how to choose the best inverters for home use with our comprehensive guide. Compare types, calculate your power needs, and ...



[Tips to Choose the Right Inverter for Homes: 12V or 24V](#)

In this guide, we'll explore the key factors to consider when making this decision, including inverter efficiency, battery bank setup, cabling cost, and the overall performance of ...



[How To Choose The Best Inverters For Home , Complete Guide](#)

Learn how to choose the best inverters for home use with our comprehensive guide. Compare types, calculate your power needs, and find the



perfect inverter for reliable ...



The ins and outs of inverters

A good rule of thumb to remember when choosing an inverter is that you need to add 20% on top of your base power requirements and select an ...

Power Inverter Buying Guide , Eaton

What to look for in a power inverter and 12 key questions to ask before you buy.



Power inverter buying guide

What is the difference between an inverter and inverter/charger? An inverter simply converts DC (battery) power into AC power and then passes it along to connected equipment. An ...





12V vs 24V vs 48V Inverter: How to Choose the Right System for ...

In this guide, we'll break down the differences between 12V, 24V, and 48V systems, covering efficiency, cost, compatibility, and ideal use cases--so you can make an ...



[MWXNE , How to Select the Right Power Inverter ...](#)

In this guide, we'll walk you through everything you need to know to select the right inverter for your home -- from calculating load ...

The ins and outs of inverters

A good rule of thumb to remember when choosing an inverter is that you need to add 20% on top of your base power requirements and select an inverter that meets this capacity.



[MWXNE , How to Select the Right Power Inverter for Home Use](#)

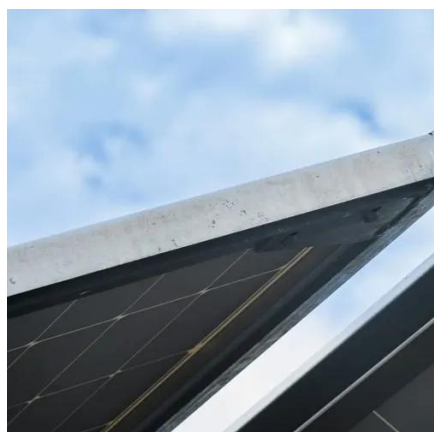
In this guide, we'll walk you through everything you need to know to select the right inverter for your home -- from calculating load requirements to understanding inverter ...





[Tips to Choose the Right Inverter for Homes: 12V ...](#)

In this guide, we'll explore the key factors to consider when making this decision, including inverter efficiency, battery bank setup, ...



Best Inverter Solutions for Photovoltaic Systems and Home Backup

EFFORTWAY 4000W Inverter DC 12V to AC 110V/120V Check Price on Amazon This 4000W continuous inverter is designed to robustly convert 12V DC to 110/120V AC with ...

[How to Choose the Right Inverter for Your Energy Needs](#)

Inverters come in various voltage ratings, such as 12V, 24V, and 48V, to match different battery systems. Higher voltage systems (e.g., 48V) are typically more efficient for ...





Contact Us

For inquiries, pricing, or partnerships:

<https://www.sccd-sk.eu>

Phone: +32 2 808 71 94

Email: info@sccd-sk.eu

Scan QR code for WhatsApp.

