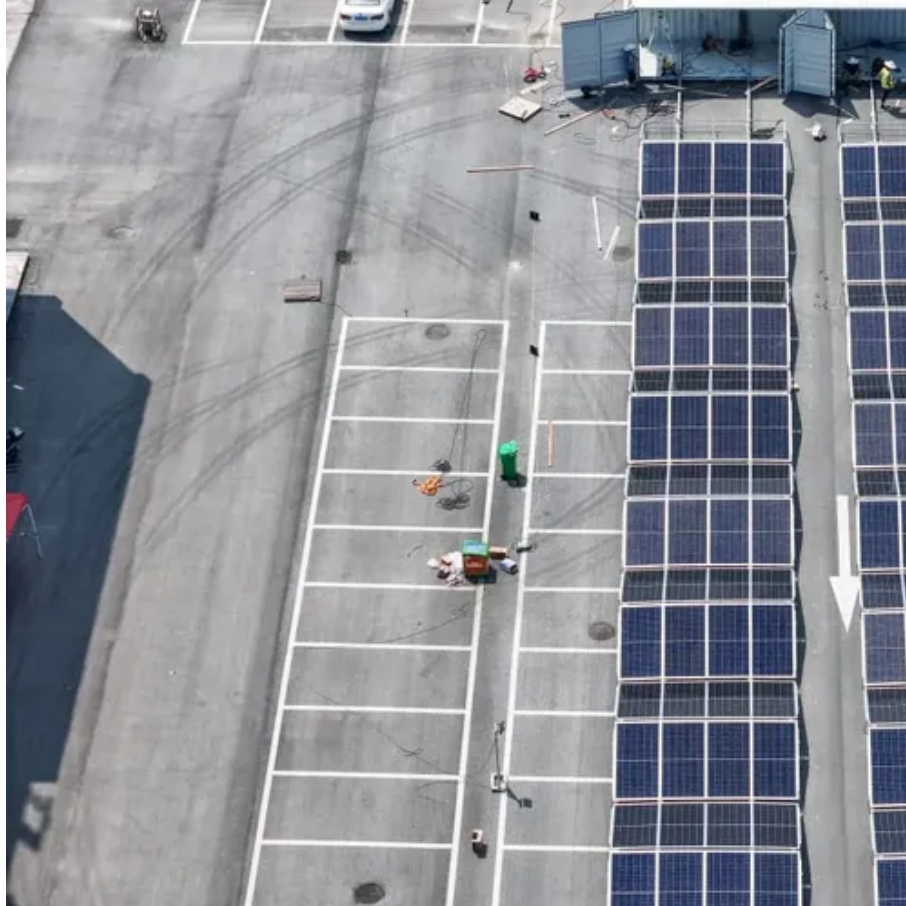




Why should solar energy storage cabinets be placed at an angle





Overview

An optimal mounting structure offers adjustable tilt angles to maximize sun exposure. The angle must be region-specific and adaptable to seasonal variations. This feature ensures consistent energy production throughout the year.

An optimal mounting structure offers adjustable tilt angles to maximize sun exposure. The angle must be region-specific and adaptable to seasonal variations. This feature ensures consistent energy production throughout the year.

Why are solar panels placed at an angle?

Solar panels are positioned at an angle primarily to maximize solar energy absorption, improve efficiency, and enhance overall performance. 1. Optimal sunlight exposure, 2. Enhanced energy capture, 3. Efficient drainage of rain and debris, 4. Reduced shading.

Besides quality panels and inverters, the effectiveness of a solar system is also largely influenced by where you place them, i.e., their solar panel angle. The angle tends to get overlooked, to be accurate. It is called the roof angle by some but is generally known as 'tilt.' Solar panel.

Optimizing the angle of solar panels isn't just about maximizing energy—it's also about managing structural integrity. Learn how tilt and spacing decisions influence roof loads, racking systems, and engineering costs. 1. Introduction As photovoltaic (PV) systems evolve, solar tilt structural load.

Thus, the ideal location for solar panels in the region is facing southwest. Another crucial consideration for solar alignment is the angle or tilt of installation. The ideal angle depends on the geographic latitude and the season. For those in countries along the equator, their panels should lie.

Utilizing a solar mounting device is helpful for several reasons, one of which is that it helps you find the best angle and orientation for the solar panels. The system works better when the panels are angled and pointed to get the most sunlight. Structures are needed to protect solar panels from.

Latitude-Based Angle Calculation Provides Optimal Results: Setting your solar



panel tilt angle equal to your location's latitude delivers the best year-round performance, with seasonal adjustments of $\pm 15^\circ$ offering potential 5-10% production improvements for adjustable systems. Solar panel.



Why should solar energy storage cabinets be placed at an angle



[The Definitive Guide to Solar Module Mounting Structure and](#)

The primary advantage of slotted angle racks lies in their modular design. This allows for easy adjustments in height and length, accommodating various storage needs.

[Why are solar panels placed at an angle? . NenPower](#)

The primary goal of solar panels is energy capture, and the angle directly influences this. As the sunlight hits the panels at a steeper angle, the efficiency of energy ...



[Solar Panel Direction & Orientation: 2025](#)

...

Discover the optimal direction and angle for solar panels to maximize energy output. Complete guide with calculations, tools, and ...

[How Solar Panel Orientation Affects Structural ...](#)

The tilt angle of a solar array directly affects the amount of wind and snow load imposed on a structure. Increasing the tilt improves ...



[Why are solar panels placed at an angle? , NenPower](#)

The primary goal of solar panels is energy capture, and the angle directly influences this. As the sunlight hits the panels at a steeper ...

[Factors That Affect Solar Panel Placement & Angle?](#)

While it may be ideal to place and angle panels in the best way possible, budget constraints may limit those options. A balance ...



[The Best Angle for Solar Panel Installation](#)

In general, solar panels should be installed so the sunlight hits them at as close to a perpendicular 90-degree angle for as long as ...



Factors That Affect Solar Panel Placement & Angle?

While it may be ideal to place and angle panels in the best way possible, budget constraints may limit those options. A balance between cost and performance is essential.



The Best Angle for Solar Panel Installation

In general, solar panels should be installed so the sunlight hits them at as close to a perpendicular 90-degree angle for as long as possible during the day. To achieve that goal, ...

Solar Panel Alignment: How Panel Location ...

Another crucial consideration for solar alignment is the angle or tilt of installation. The ideal angle depends on the geographic latitude and the ...



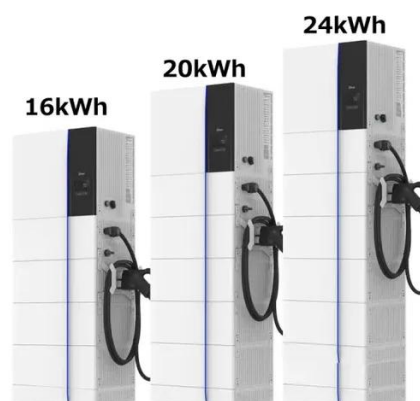
Solar Panel Angle and Performance: Why Tilt and Direction Matter

In commercial applications, almost every hour of the day requires energy, and thus, the proper angle to the sun is required to be efficiently drawn from the panels directly or ...



[How to Find the Best Orientation and Angle of ...](#)

To efficiently capture sunlight, solar panels need to be tilted a steeper angle. For instance, the recommended tilt for a solar panel system in Detroit (42° ...



Solar Panel Orientation and Tilt Angle: How Mounting Structures ...

Utilizing a solar mounting device is helpful for several reasons, one of which is that it helps you find the best angle and orientation for the solar panels. The system works better when the ...

[How to Find the Best Orientation and Angle of Solar Panels?](#)

To efficiently capture sunlight, solar panels need to be tilted a steeper angle. For instance, the recommended tilt for a solar panel system in Detroit (42° N) is steeper than what's suggested ...



[Solar Panel Direction & Orientation: 2025 Complete Guide](#)

Discover the optimal direction and angle for solar panels to maximize energy output. Complete guide with calculations, tools, and location-specific recommendations for 2025.



How Solar Panel Orientation Affects Structural Design in 2025

The tilt angle of a solar array directly affects the amount of wind and snow load imposed on a structure. Increasing the tilt improves sun exposure--especially in northern ...



Solar Panel Orientation and Tilt Angle: How ...

Utilizing a solar mounting device is helpful for several reasons, one of which is that it helps you find the best angle and orientation for the solar panels. ...

Solar Panel Alignment: How Panel Location Impacts Energy Output

Another crucial consideration for solar alignment is the angle or tilt of installation. The ideal angle depends on the geographic latitude and the season. For those in countries along the equator, ...





Contact Us

For inquiries, pricing, or partnerships:

<https://www.sccd-sk.eu>

Phone: +32 2 808 71 94

Email: info@sccd-sk.eu

Scan QR code for WhatsApp.

