



# Wind energy utilization and energy storage combined solution





## Overview

---

First, based on the structural analysis of the combined system, an optimization model of energy storage configuration is established with the objectives of the lowest total investment cost of the ESS, the lowest load loss rate and the lowest new energy abandonment rate, which.

First, based on the structural analysis of the combined system, an optimization model of energy storage configuration is established with the objectives of the lowest total investment cost of the ESS, the lowest load loss rate and the lowest new energy abandonment rate, which.

Harness wind's potential by combining wind turbines with energy storage solutions to stabilize output and align supply with demand. Develop a portfolio approach incorporating multiple storage technologies optimized for different timescales, from flywheels and batteries for short-term smoothing to.

Despite its potential, a major challenge remains: balancing energy production with consumption and, consequently, energy storage. This article explores innovative solutions that enable wind turbines to store energy more efficiently. Advancements in lithium-ion battery technology and the development.

In order to improve the operation reliability and new energy consumption rate of the combined wind-solar storage system, an optimal allocation method for the capacity of the energy storage system (ESS) based on the improved sand cat swarm optimization algorithm is proposed. First, based on the.

Effective energy storage solutions, such as batteries and hydro storage, are essential to balance supply and demand. By harnessing wind power, communities can access a clean and inexhaustible resource that significantly diminishes dependence on fossil fuels. Wind does not blow all the time.

To effectively store wind energy, we can employ various advanced technologies, each suited for specific applications. Lithium-ion batteries are favored for their high energy density, typically ranging from 150 to 250 Wh/kg, with over 90% efficiency. Pumped hydro storage (PHS) involves elevating.

hydro, compressed air storage), and thermal storage, can balance energy supply



and demand between wind generation and load. By smoothing output, shifting energy delivery, and reducing peak demand, storage systems increase wind energy utilization and enhance grid flexibility and reliability.



## Wind energy utilization and energy storage combined solution

---



### [Strategic design of wind energy and battery ...](#)

This study investigates the techno economic benefits of integrating Battery Energy Storage Systems (BESS) into wind power ...

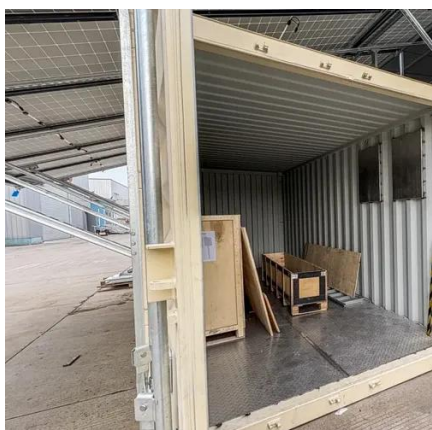
### [Paper 236 Synergistic Optimization of Wind Energy and ...](#)

es and enhance renewable energy consumption, the integration and optimization of energy storage technologies are essential. Energy storage systems, including electrochemical storage ...



### **Optimization of Energy Storage Allocation in Wind Energy Storage**

In order to improve the operation reliability and new energy consumption rate of the combined wind-solar storage system, an optimal allocation method for the capacity of the ...



### [Harnessing the Wind: Smart Energy Storage ...](#)

Harness wind's potential by combining wind turbines with energy storage solutions to stabilize output and align supply with demand.



## A comprehensive review of wind power integration and energy ...

Integrating wind power with energy storage technologies is crucial for frequency regulation in modern power systems, ensuring the reliable and cost-effective operation of ...

## Harnessing the Wind: Smart Energy Storage Solutions for a ...

Harness wind's potential by combining wind turbines with energy storage solutions to stabilize output and align supply with demand.



## Integration of Energy Storage with Wind Power Conversion ...

To address these challenges, the integration of Energy Storage Systems (ESS) with Wind Power Conversion Systems (WPCS) has gained significant attention.



## Wind Energy Storage Systems: Innovative Solutions

Advancements in battery technology, particularly hybrid storage systems that combine multiple energy storage methods, enhance the reliability of wind energy. Integrating ...

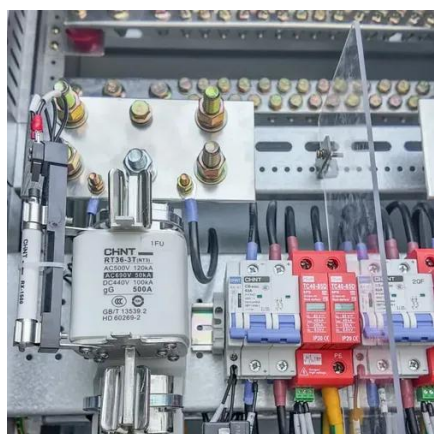


## **A comprehensive review of wind power integration and energy storage**

Integrating wind power with energy storage technologies is crucial for frequency regulation in modern power systems, ensuring the reliable and cost-effective operation of ...

## How to Store Wind Energy: Top Solutions Explained

Energy Storage Systems (ESS) maximize wind energy by storing excess during peak production, ensuring a consistent power supply. Lithium-ion batteries are the dominant technology due to ...



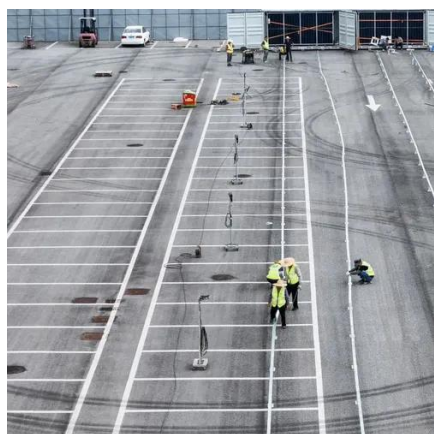
## **The future of wind energy: Efficient energy storage for wind turbines**

Since wind conditions are not constant, it is crucial to develop hybrid power plants that combine wind energy with storage systems. These technologies allow wind turbines to be ...



## Strategic design of wind energy and battery storage for efficient ...

This study investigates the techno economic benefits of integrating Battery Energy Storage Systems (BESS) into wind power plants by developing and evaluating optimized ...



### Hybrid Distributed Wind and Battery Energy Storage Systems

For individuals, businesses, and communities seeking to improve system resilience, power quality, reliability, and flexibility, distributed wind can provide an affordable, accessible, and ...



## Contact Us

---

For inquiries, pricing, or partnerships:

<https://www.sccd-sk.eu>

Phone: +32 2 808 71 94

Email: [info@sccd-sk.eu](mailto:info@sccd-sk.eu)

Scan QR code for WhatsApp.

