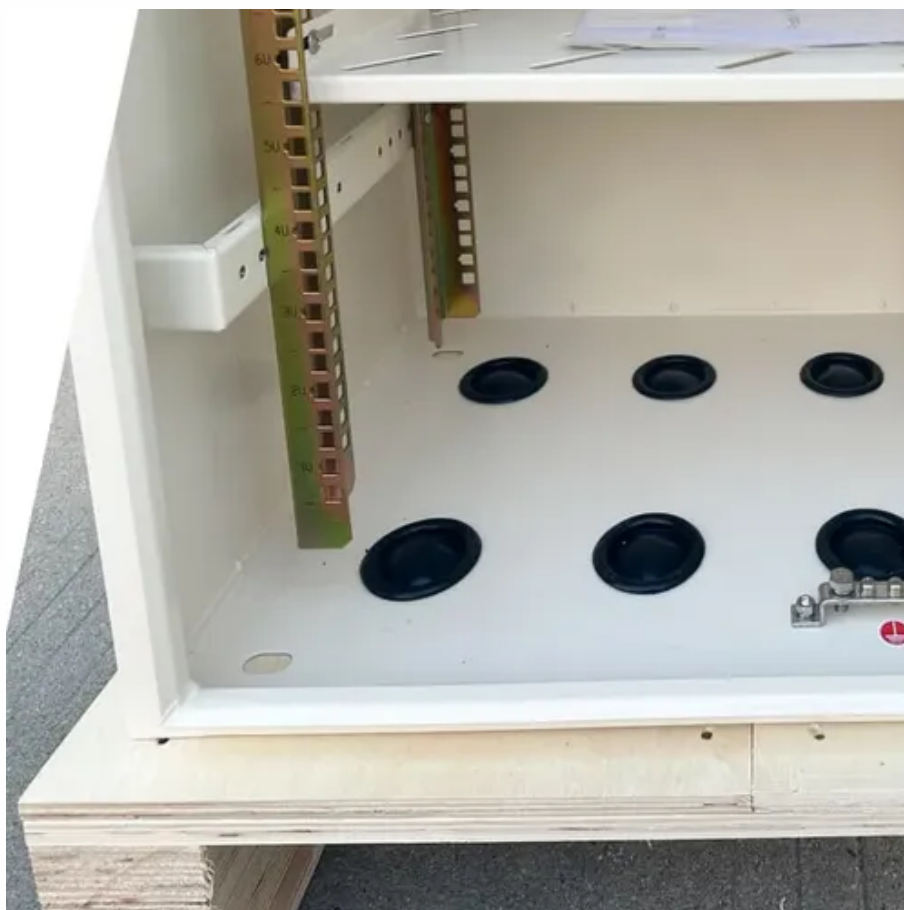




# Wind measurement system for wind power generation





## Wind measurement system for wind power generation

---



### [Wind Energy: Operational met, resource assessment, and power](#)

Campbell Scientific turn-key systems for wind-resource assessment and power performance are specifically designed to meet the requirements of IEC 61400-12-1. These systems have a wide ...

### Wind

Wind Wilmers Messtechnik GmbH has been a leading provider of measurement systems for the wind energy industry for over 30 years. Our high-precision data loggers and sensors are ...



### WMS100

The WMS100 is a purpose built wind measurement system specifically designed for operational wind power plants. The WMS station delivers data shareholders, site operators and power off ...

### Wind measurement and wind modeling

To this end, Fraunhofer IWES has developed a range of different numerical site assessment tools for the calculation of wind fields and wind farm



yields in complex terrain geometries and the ...

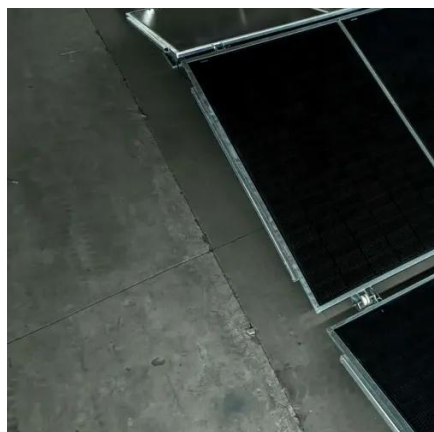


## Wind Energy - Gill Instruments

Gill provides diverse sensor solutions for the wind energy market, ranging from continuous turbine gearbox condition monitoring through to wind measurement for wind profiling and wind turbine ...

## [Wind Sensing and Modeling , Grid Modernization , NLR](#)

NLR's wind sensing and modeling work supports the deployment of wind-based generation technologies for all stages of a plant's life, from resource estimates to construction.



## Wind resource measurement

A variety of technologies are available to measure wind conditions. The two most important characteristics of wind are speed and direction. [1] Several of the most common systems for ...



## Wind

NRG Systems has been designing and manufacturing wind measurement solutions for over four decades. We pioneered the complete system approach to wind resource assessment and ...



## Wind Energy Testing and Data Acquisition Solution , DEWETRON

DEWETRON provides advanced measurement systems for energy and power analysis, ideal for ensuring grid conformity in renewable energy systems. With high precision and ...

## [Wind measurement for wind farm sites](#)

To make sure that the location of wind farms is the one that allows us to make the most of wind energy, a wind measurement study must be carried out. We tell you how it is done, why it is so ...





## Contact Us

---

For inquiries, pricing, or partnerships:

<https://www.sccd-sk.eu>

Phone: +32 2 808 71 94

Email: [info@sccd-sk.eu](mailto:info@sccd-sk.eu)

Scan QR code for WhatsApp.

