



# Wind-solar complementarity for cellular solar container communication stations





## Overview

---

This paper proposes constructing a multi-energy complementary power generation system integrating hydropower, wind, and solar energy. Can a scenario generation approach complement a large-scale wind and solar energy production?

Table 1. Details of complementary .

This paper proposes constructing a multi-energy complementary power generation system integrating hydropower, wind, and solar energy. Can a scenario generation approach complement a large-scale wind and solar energy production?

Table 1. Details of complementary .

Outdoor Communication Energy Cabinet With Wind Turbine Highjoule base station systems support grid- connected, off-grid, and hybrid configurations, including integration with solar panels or wind turbines for sustainable, self-sufficient operation. Hybrid solar PV/hydrogen fuel cell-based cellular.

Solar container communication wind power constructi gy transition towards renewables is central to net-zero emissions. However,building a global power sys em dominated by solar and wind energy presents immense challenges. Here,we demonstrate the potentialof a globally i terconnected solar-wind.

Optimization and improvement method for complementary power generation capacity of wind solar storage in distributed photovoltaic power stations Assessing the potential and complementary characteristics. Using historical data from observation stations, they assessed the complementary.

A study 12 designed and implemented a solar hybrid power solution for off-grid telecommunication sites; a diesel generator was used to support the site whenever there was insufficient energy . Communication base station stand-by power supply system . The invention relates to a communication.

Let''s explore how solar energy is reshaping the way we power our communication networks and how it can make these stations greener, smarter, and more self-sufficient. This paper describes the design of an off-grid wind-solar complementary power generation system of a 1500m high mountain weather.



Can a multi-energy complementary power generation system integrate wind and solar energy?

Simulation results validated using real-world data from the southwest region of China. Future research will focus on stochastic modeling and incorporating energy storage systems. This paper proposes.



## Wind-solar complementarity for cellular solar container communication



### [Solar container communication wind power construction 2025](#)

Communication base station wind and solar complementary project A copula-based complementary coefficient: Mar 1, 2025 & #183; In this paper, a wind-solar energy

### A copula-based wind-solar complementarity coefficient: Case ...

This study processed a wind-solar complementarity coefficient based on the Copula function and applied it to the study of wind-solar energy complementarity in the UYRCEB and ...



### Operating communication base stations with wind and solar ...

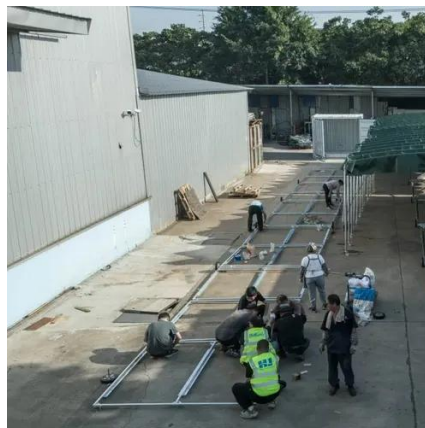
The wind-solar-diesel hybrid power supply system of the communication base station is composed of a wind turbine, a solar cell module, an integrated controller for hybrid energy

### [Wind-solar hybrid for outdoor communication base stations](#)

The invention relates to a wind and solar hybrid generation system for a communication base station based on dual direct-current bus control,



comprising photovoltaic arrays, a wind-power



### Small-sized communication base station wind and solar ...

The invention relates to a communication base station stand-by power supply system based on an activation-type cell and a wind-solar complementary power supply system.



### **Analysis of the reasons why wind-solar complementary solar ...**

By calculating the Kendall rank correlation coefficient between wind and solar energy in China, the study mapped the spatial distribution of wind-solar energy complementarity.



### Communication base station wind and solar complementary ...

The invention relates to a communication base station stand-by power supply system based on an activation-type cell and a wind-solar complementary power supply system.





## Analysis of the reasons why wind-solar complementary solar container

By calculating the Kendall rank correlation coefficient between wind and solar energy in China, the study mapped the spatial distribution of wind-solar energy complementarity.



## Small-sized aerial solar container communication station ...

Overview Can a multi-energy complementary power generation system integrate wind and solar energy? Simulation results validated using real-world data from the southwest region of China. ...

## Optimal dimensioning of grid-connected PV/wind hybrid

In this context, the optimal design of hybrid renewable energy systems (HRES) that combine solar, wind, and energy storage technologies is critical for achieving sustainable and ...



## How about the wind and solar complementarity of Castries ...

To face the challenge, here we present research about actionable strategies for wind and solar photovoltaic facilities deployment that exploit their complementarity in order to



## **Small-sized communication base station wind and solar complementarity**

The invention relates to a communication base station stand-by power supply system based on an activation-type cell and a wind-solar complementary power supply system.





## Contact Us

---

For inquiries, pricing, or partnerships:

<https://www.sccd-sk.eu>

Phone: +32 2 808 71 94

Email: [info@sccd-sk.eu](mailto:info@sccd-sk.eu)

Scan QR code for WhatsApp.

